

Stopwatch*

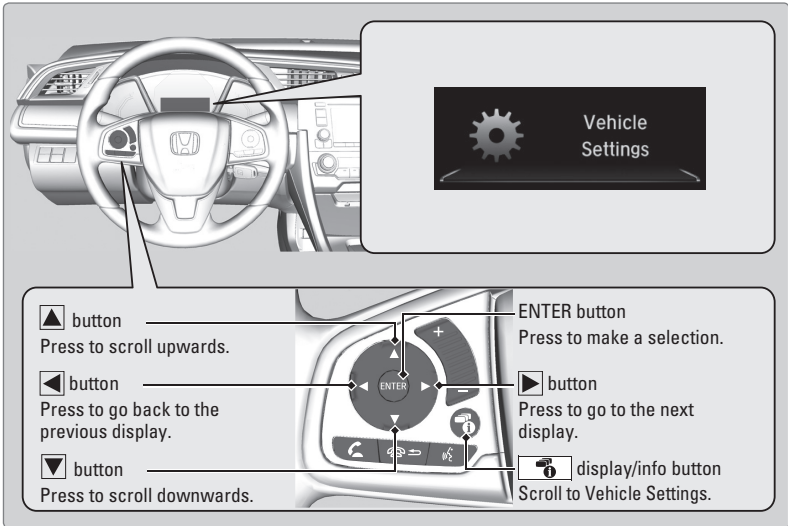
Measure and show lap times.

- Press ENTER to show the lap time display.
- Press ENTER to start or stop the measurement.
- Press ▲ or ▼ to record a lap time split.
- Press the Back button to show the recorded times.



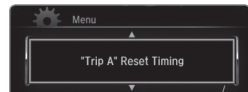
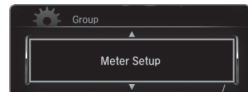
Vehicle Settings*

Use the Driver Information Interface to customize certain features. Use the steering wheel controls to select the Vehicle Settings screen when the vehicle is stopped.



Below is an example of how to change a setting.

1. Press the display/info button until you see the Vehicle Settings screen. Press the ENTER button to select it.
2. Press the ▲ or ▼ button to scroll to Meter Setup, and select it.
3. Scroll to "Trip A" Reset Timing, and select it.
4. Scroll to the option you want, and select it.
5. Scroll to the Exit option, and select it. Repeat to exit the menus.



**if equipped*

■ Customizing Door Lock Settings

Customize the auto door-lock setting to your preference. Begin with the vehicle off.

Models with information display and continuously variable transmission

1.	Apply the parking brake	
2.	Position the driver's door	
3.	Models with key ignition	Models with Smart Entry
	<ol style="list-style-type: none"> a. Set the ignition switch to ON b. Press and hold the lock side of the master door lock switch until you hear a click (~ 5 sec.) c. Set the ignition switch to ACC 	<ol style="list-style-type: none"> a. Push ENGINE START/STOP twice (do not press the brake pedal) b. Press and hold the lock side of the master door lock switch until you hear a click (~ 5 sec.) c. Push ENGINE START/STOP twice (do not press the brake pedal)

To enable auto door lock: Move the shift lever out of Park (P), then close the driver's door.

To disable auto door lock: Move the shift lever to Park (P), then open the driver's door.

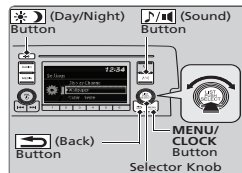
Customized Features

Use the Settings menu to customize certain features when the vehicle is stopped.

Models with color audio system

Use the selector knob to make and enter selections.

1. Press the MENU/CLOCK button.
2. Select Settings.
3. Select a setting option and make your preferred changes.
4. Press the Back button to exit the menus.



Models with Display Audio

Select items on the touchscreen to make selections.

1. From the HOME screen, select SETTINGS.
2. Select an option (Clock, Info, Camera, *Bluetooth*[®]/Wifi, Smartphone, Phone, Audio, System, or Vehicle).
3. Select a setting option and make your preferred changes.
4. Press BACK to exit the menus.



■ Customization Example: Door Lock Settings

For Display Audio, with the vehicle stopped and the power mode in ON, follow the steps below:

Auto Door Lock Choices	Auto Door Unlock Choices
With Vehicle Speed	All Doors When Driver's Door Opens
Shift from Park	All Doors When Shifted to Park
Off	All Doors When Ignition Switched Off
	Off

1. From the home screen, press Settings.
2. Press Vehicle.
3. Press Door/Window Setup:
 - To customize door lock settings, press Auto Door Lock.
 - To customize door unlock settings, press Auto Door Unlock.
4. Choose a setting:
 - The default lock setting is With Vehicle Speed; CVT models, the default lock setting is Shift from Park (P).
 - The default unlock setting is All Doors when Driver's Door Opens; CVT models, the default unlock setting is All Doors When Shifted to Park (P).
5. Press BACK when you are done.

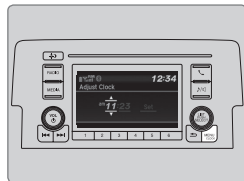
Setting the Clock

Adjust the time using the steps described for your vehicle type.

Models with color audio system

Use the selector knob to make and enter selections.

1. Press and hold the MENU/CLOCK button.
2. Select the hour and adjust as necessary.
3. Select the minutes and adjust as necessary.
4. Select Set when complete.



Models with Display Audio

The time is automatically set using GPS signals.

**if equipped*