

AUDIO AND CONNECTIVITY

Learn how to operate the vehicle's audio system.

Basic Audio Operation

Connect audio devices and operate buttons and displays for the audio system.

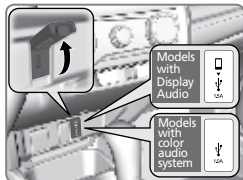
■ USB Port

1. Open the USB cover in the front console.

The USB port (1.0A) is for playing audio files on a USB flash drive and connecting a cellular phone and charging device.

The USB port (1.5A) is for charging devices, playing audio files and connecting compatible phones with Apple CarPlay or Android Auto.

An additional USB port is located inside the center console.*



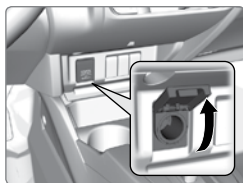
iPod and iPhone are trademarks of Apple, Inc.

Applicable laws may prohibit the operation of handheld electronic devices while operating a vehicle.

■ Accessory Power Socket

Open the socket cover in the front console to use power when the vehicle is on.

An additional power socket is located inside the center console.*



NOTICE

Do not insert an automotive type cigarette lighter element. This can overheat the power socket.

**if equipped*

■ Audio Remote Controls*

You can operate certain functions of the audio system using the steering wheel controls.

SOURCE button: Cycle through available audio modes.

◀/▶ buttons: Change presets, tracks, albums, or folders.

+/- buttons: Adjust audio volume.

Menu button*: From the audio screen, press and hold to choose options for the current audio mode (Models with Display Audio). Use the +/- buttons and the SOURCE button to scroll and enter selections.



FM/AM/XM® Radio

Press ◀ or ▶ for the next or previous station.

Press and hold ◀ or ▶ for the next or previous strong station.

CD*/iPod®/USB/Bluetooth® Audio

Press ◀ or ▶ for the next or previous track.

Press and hold ◀ or ▶ for the next or previous folder (CD*/USB).

Pandora® (U.S. only)

Press ▶ for the next song.

Press and hold ◀ or ▶ for the next or previous station.

**if equipped*

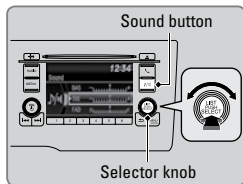
■ Adjusting the Sound

Adjust various sound settings.

Models with color audio system

Use the selector knob to make and enter selections.

1. Press the Sound button.
2. Select a sound mode to change and adjust it using the selector knob.
3. Press the Back button to exit the menu.



Models with Display Audio

Make selections using the touchscreen.

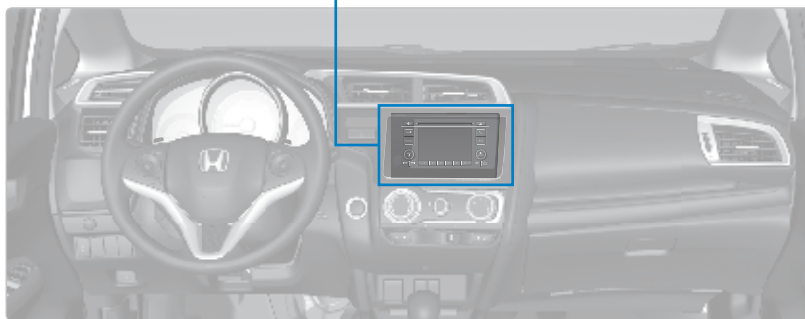
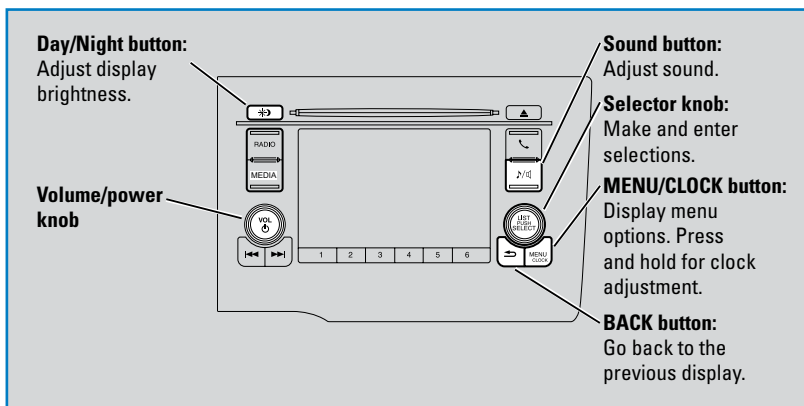
1. From the HOME screen, select Audio.
2. Select Sound.
3. Select the tabs to change the sound mode and adjust the setting.
4. Select OK when complete.



Models with color audio system

Color Audio System*

Use the buttons to control the display and audio system.



**if equipped*

Models with color audio system

FM/AM Radio

Play FM or AM radio stations.

Radio button:

Select a band.

Seek/Skip buttons:

Search up and down the selected band for a station with a strong signal.



Selector knob:

Rotate to tune radio frequency. Press for more options.

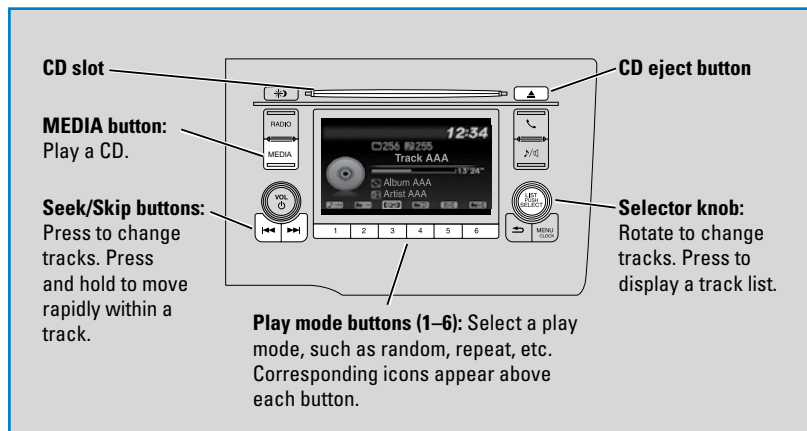
Preset buttons (1-6): Press and hold a preset button to store the current station. Press a preset button to select a previously stored station.



Models with color audio system

Compact Disc (CD)

The audio system supports audio CDs, CD-Rs, and CD-RWs in MP3, WMA, or AAC formats.

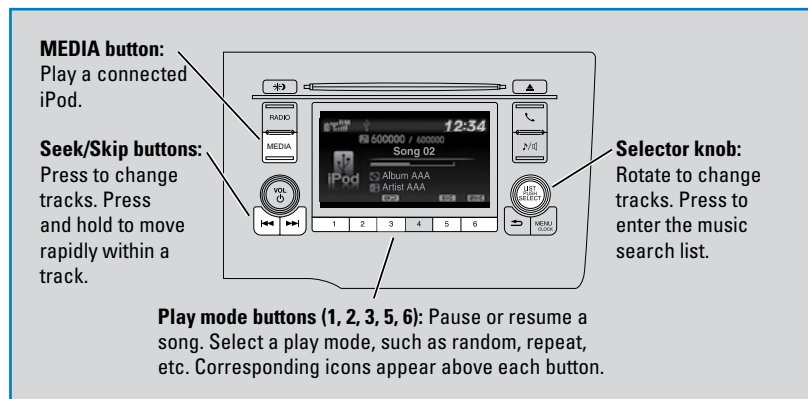
**NOTICE**

Do not use CDs with adhesive labels or insert a damaged CD. Inserting these types of CDs may cause them to get stuck or damage the audio unit.

Models with color audio system

iPod®

Play and operate an iPod through the vehicle's audio system. Connect your device to the USB port.



■ Searching for Music

Use the selector knob to search for tracks stored on the iPod.

1. From the audio screen, press the selector knob.
2. Select a search category.
3. Select the track you want to play.



Models with color audio system

USB Flash Drive

Play and operate a USB flash drive through the vehicle's audio system. Connect your device to the USB port.

MEDIA button: Play a connected USB flash drive.

Seek/Skip buttons: Press to change tracks. Press and hold to move rapidly within a track.



Selector knob: Rotate to change tracks. Press to display the folder list.

Play mode buttons (1–6): Select a play mode, such as random, repeat, etc. Corresponding icons appear above each button.



■ Searching for Music

Use the selector knob to search for tracks stored on the flash drive.

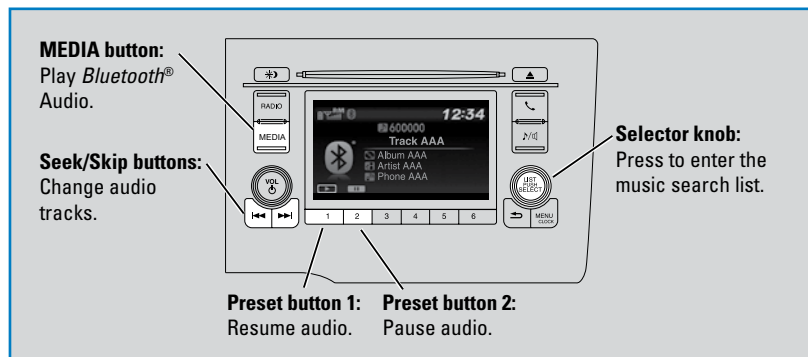
1. From the audio screen, press the selector knob.
2. Select a folder.
3. Select the track you want to play.



Models with color audio system

Bluetooth® Audio

Play streaming or stored audio from your compatible phone through the vehicle's audio system. Visit automobiles.honda.com/handsfreelink to check phone compatibility. Standard data rates apply with your phone service provider. Connect your phone to **Bluetooth® HandsFreeLink®**.

**■ Searching for Music**

Use the selector knob to search for tracks stored on the device.

1. From the audio screen, press the selector knob.
2. Select a category.
3. Select the track you want to play.

**Notes:**

- Make sure the volume on your phone is properly adjusted.
- You may need to enable additional settings on your phone for playback.
- The resume/pause function and remote audio controls are not supported on all phones.

Applicable laws may prohibit the operation of handheld electronic devices while operating a vehicle. Launch streaming audio on your phone only when safe to do so.

BLUETOOTH® HANDSFREELINK® (HFL)

Learn how to operate the vehicle's hands-free calling system.

Models with color audio system

Basic HFL Operation

Make and receive phone calls using the vehicle's audio system, without handling your phone. Visit automobiles.honda.com/handsfreelink to check phone compatibility.

To reduce the potential for driver distraction, certain manual functions may be inoperable or grayed out while the vehicle is moving. Stop or pull over to perform the function.

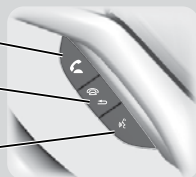
HFL Controls

Use the controls to enter information and make selections.

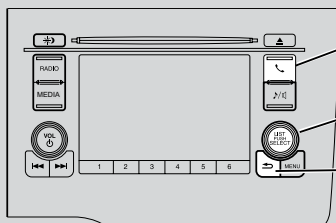
Pick-Up button: Answer an incoming call.

Hang-Up/Back button: End or decline a call, or cancel an operation.

Talk button: Make a call using a stored voice tag.



HFL display



PHONE button: Display the phone screen.

Selector knob: Rotate and press to make selections.

Back button: Go back to the previous display.

Models with color audio system

Pairing a Phone

To use hands-free phone and streaming audio functions, you must first pair your phone to the system. This can only be done when the vehicle is stopped. Use the selector knob to make and enter selections.

■ Pairing the First Phone

1. Press the Phone button to go to the Phone screen. A prompt appears. Select Yes.
2. Make sure your phone is in discovery mode. Select OK.
3. The system searches for your phone. Select your phone when it appears on the list.
If your phone does not appear: Select Phone not found? and search for HandsFreeLink from your phone. Connect to HFL.
4. The system gives you a pairing code. Compare it to the code that appears on your phone. Connect to HFL from your phone.



■ Pairing an Additional Phone

1. Press the Phone button to go to the Phone screen. If a prompt appears asking to connect to a phone, select No.
2. Select Phone Setup.
3. Select Bluetooth Setup.
4. Select Add new device.
5. Make sure your phone is in discovery mode. Select OK.
6. The system searches for your phone. Select it when it appears on the list.
If your phone does not appear: Select Phone not found?, and search for HandsFreeLink from your phone. Connect to HFL.
7. The system gives you a pairing code. Enter it on your phone when prompted.



Applicable laws may prohibit the operation of handheld electronic devices while operating a vehicle.

Models with color audio system

Making a Call

You can make a call using several methods.

■ Dialing a Number

Enter a 10-digit phone number to call. Use the selector knob to make and enter selections. This method is inoperable while the vehicle is moving.

1. Press the Phone button.
2. Select Dial.
3. Enter the phone number. Select the green phone icon to call.



■ Using the Phonebook

When your phone is paired, its phonebook is automatically imported to the system. Use the selector knob to make and enter selections. This method is inoperable while the vehicle is moving.

1. Press the Phone button.
2. Select Phonebook.
3. Scroll through the list to find the name and number you want to call and select it to call.



■ Storing Speed Dial Entries

Store up to 20 numbers for quick dialing. Use the selector knob to make and enter selections.

1. Press the Phone button.
2. Select Phone Setup.
3. Select Speed Dial, then select Add New.
4. Select an entry method.
5. If desired, you can create a voice tag for the number. Follow the prompts.



■ Using Speed Dial

Make calls quickly using stored speed dial entries. Use the selector knob to make and enter selections.

1. Press the Phone button.
2. Select Speed Dial.
3. Scroll through the list to find the entry you want to call and select it to call.



Speed dial entries with stored voice tags can be called using the Talk button. Press the Talk button and follow the prompts.