

AUDIO AND CONNECTIVITY

Learn how to operate the vehicle's audio system.

Basic Audio Operation

Connect audio devices and operate buttons and displays for the audio system.

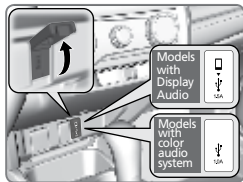
■ USB Port

1. Open the USB cover in the front console.

The USB port (1.0A) is for playing audio files on a USB flash drive and connecting a cellular phone and charging device.

The USB port (1.5A) is for charging devices, playing audio files and connecting compatible phones with Apple CarPlay or Android Auto.

An additional USB port is located inside the center console.*



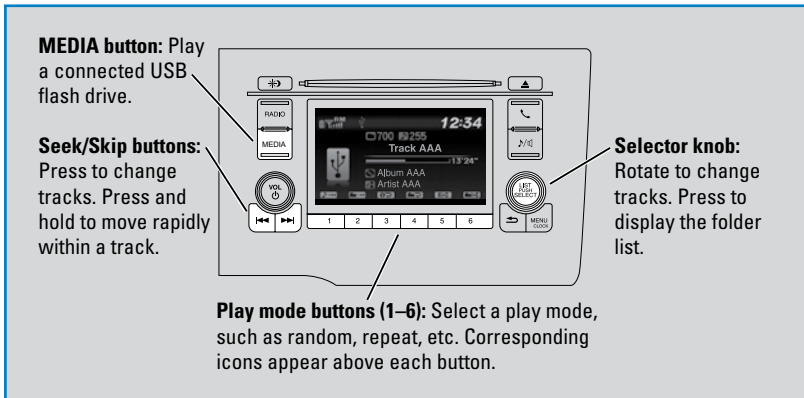
*iPod and iPhone are trademarks of Apple, Inc.
Applicable laws may prohibit the operation
of handheld electronic devices while operating a vehicle.*

**if equipped*

Models with color audio system

USB Flash Drive

Play and operate a USB flash drive through the vehicle's audio system. Connect your device to the USB port.

**Searching for Music**

Use the selector knob to search for tracks stored on the flash drive.

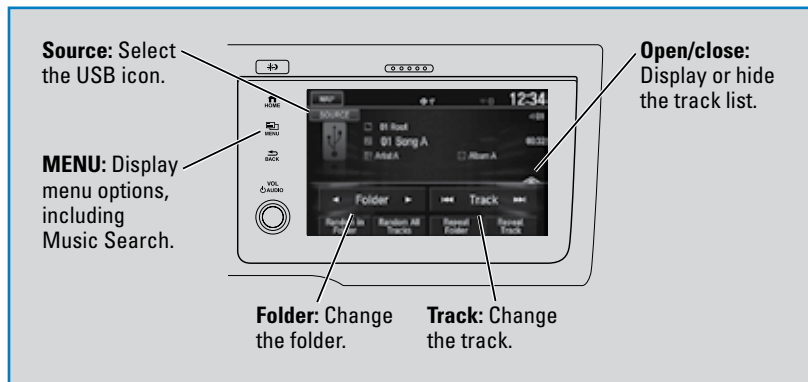
1. From the audio screen, press the selector knob.
2. Select a folder.
3. Select the track you want to play.



Models with Display Audio

USB Flash Drive

Play and operate a USB flash drive through the vehicle’s audio system. Connect your device to the USB port.



■ Searching for Music

Use the touchscreen to search for tracks stored on the USB flash drive.

1. From the audio screen, press MENU.
2. Select Music Search.
3. Select a folder.
4. Select the track you want to play.

