

# AUDIO AND CONNECTIVITY

Learn how to operate the vehicle's audio system.

## Basic Audio Operation

Connect audio devices and operate buttons and displays for the audio system.

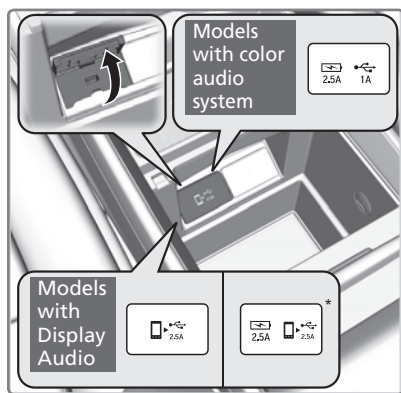
### ■ USB Port

Connect a USB flash drive or other audio device, such as an iPod or iPhone®. Install the flash drive or cable connector to the USB port in the center console.

#### Models with color audio system

The right-side port (1.0A) is for playing audio, connecting a phone, and device charging.

The left-side port (2.5A)\* is for device charging only.

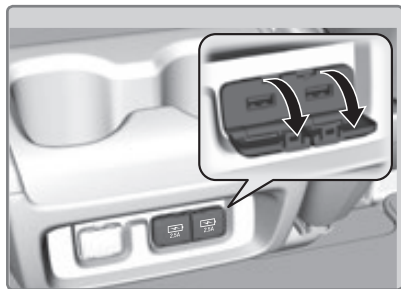


#### Models with Display Audio

The USB port (2.5A) is for playing audio, charging devices, and connecting to Apple CarPlay or Android Auto.

The left-side port\* (2.5A) is for device charging only.

Additional charging-only ports are on the back of the center console.



*iPod and iPhone are trademarks of Apple, Inc.*

*\*if equipped*

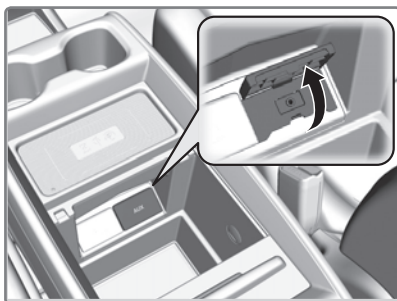
*Your vehicle comes equipped with software, which is governed by the End User License Agreement in this vehicle's Owner's Manual, and which contains a binding arbitration clause. Please refer to the End User License Agreement for the terms and conditions governing your use of the installed software, as well as the applications, services, functions, and content provided through the software. Your use of the installed software will serve as your consent to the terms and conditions of the End User License Agreement.*

*You may opt out of the arbitration provisions within 30 days of your initial use of the Software by sending a signed, written notice to HONDA at American Honda Motor Co., Inc. Honda Automobile Customer Services Mail Stop 100-5E-8A, 1919 Torrance Blvd. Torrance, CA 90501-2746*

### ■ Auxiliary Input Jack

Connect standard audio devices with a 1/8-inch (3.5 mm) stereo miniplug.

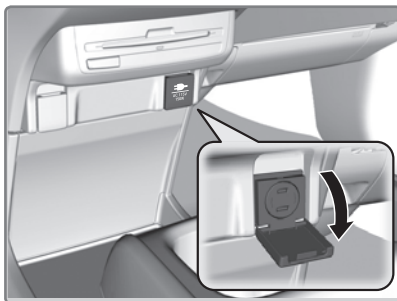
1. Open the AUX cover.
2. Insert the miniplug attached to the audio device into the jack.



### ■ AC Power Outlet\*

The outlet can supply power for appliances up to 115 volts that are rated 150 watts or less when the engine is running.

1. Open the socket cover.
2. Slightly plug in the appliance, turn it 90 degrees clockwise, then push it in all the way.



### NOTICE

Do not use the AC power outlet for electric devices requiring high initial peak wattage or extremely stable power regulation. This includes medical equipment.

*\*if equipped*

## ■ Accessory Power Sockets

Open the socket cover to use power when the vehicle is on.

Power sockets are located in the front console and the driver's side rear cargo area and the third-row seat\*.



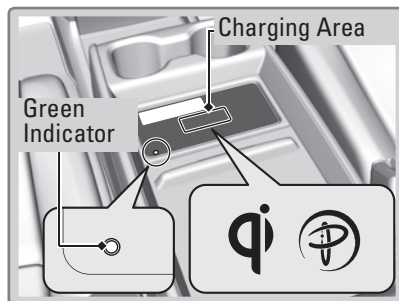
### NOTICE

Do not insert an automotive type cigarette lighter element. This can overheat the power socket.

## ■ Wireless Charger\*

Charge your Qi®-compatible device when the vehicle is in ACCESSORY mode or ON.

1. Place the chargeable side of the device on the charge area. The system begins charging the device and the green indicator appears.
2. The green indicator turns off when charging is complete. On some devices, the green indicator may blink when charging is complete.



### Notes:

- This system consumes a lot of power. It is best to charge your device when the engine is running.
- If the indicator light is blinking, there may be an object between the device and charging area, the device may have moved, or the charger is malfunctioning.
- The device may not charge if you are near strong electromagnetic waves, such as at a gas station.
- The device and charging area may get warm during charging. This is normal.

\*if equipped  
Qi® is a registered trademark of the Wireless Power Consortium.

**⚠ CAUTION**

- Metal objects between the charger and the device to be charged will get hot and can burn you.
- Remove foreign objects from the charger before charging the device.

**NOTICE**

- Do not attach a metal object to the charger.
- Do not charge if the charger is covered with a towel, layer of dust, etc.
- Do not allow the charger to get wet.
- Do not wipe the charger with oils, alcohol, benzene, thinners, etc. or expose it to aerosols.
- Do not use the charger if it is malfunctioning. In the unlikely event the charger emits smoke, abnormal odors or unusual sounds, stop use immediately.
- Do not place any magnetic devices, such as credit cards or watches within the charge area while charging. The data on credit cards can be lost and watches may stop working.

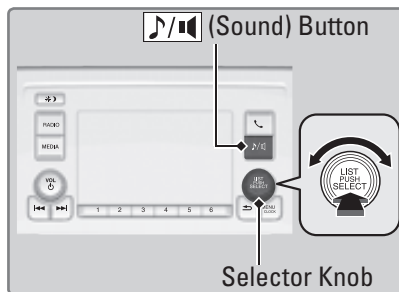
**■ Adjusting the Sound**

Adjust various sound settings.

**Models with color audio system**

Use the selector knob to make and enter selections.

1. Press the Sound button.
2. Select a sound mode to change, and adjust it using the selector knob.
3. Press the Back button to exit the menu.

**Models with Display Audio**

Make and enter selections using the touchscreen.

## ■ Audio Remote Controls

You can operate certain functions of the audio system using the steering wheel controls.

### Models with color audio

**SOURCE button:** Cycle through available audio modes.

**+ / - (volume) bar:** Adjust audio volume.

**⏮ / ⏭ buttons:** Change presets, tracks, albums, or folders.



### FM/AM Radio

Press **⏮** or **⏭** for the next or previous preset station.

### iPod/USB/Bluetooth Audio

Press **⏮** or **⏭** for the next or previous track.

### Models with Display Audio

**▲ / ▼:** Press to cycle through the audio modes.

**+ / - bar:** Press the ends of the bar to adjust audio volume.

**⏮ / ⏭ buttons:** Change presets, tracks, albums, or folders.

**ENTER button:** Make audio selections in the Driver Information Interface.



### FM/AM/SiriusXM Radio\*

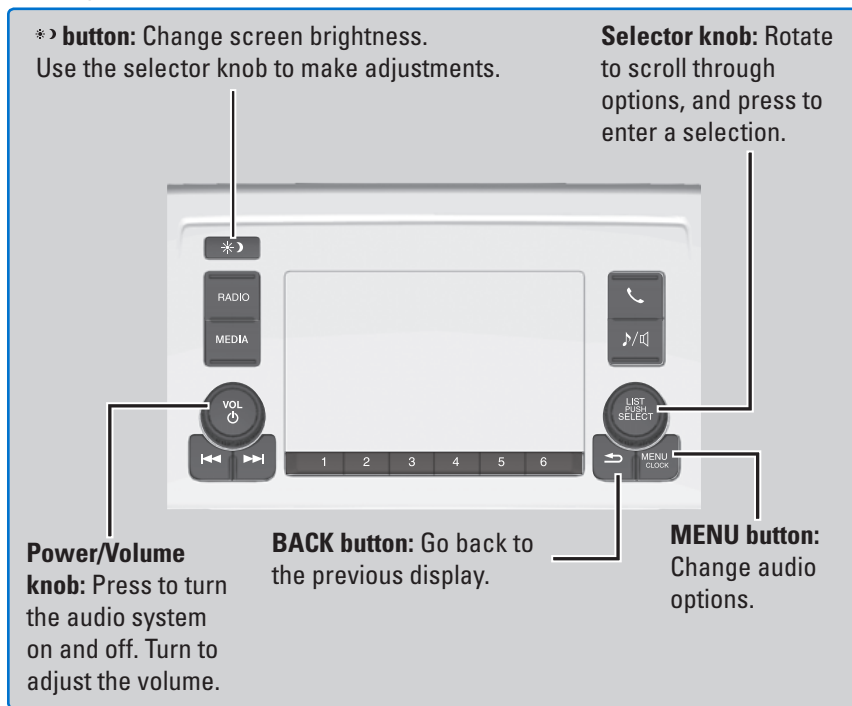
Press **⏮** or **⏭** for the next or previous preset station.

### iPod/USB/Bluetooth Audio

Press **⏮** or **⏭** for the next or previous track.

## Color Audio Operation\*

Display audio or phone information. Use the buttons to control the display and audio system.



## Display Audio Operation\*

Use simple gestures—including touching, swiping, and scrolling—to operate certain audio functions.

Some items may be grayed out during driving to reduce the potential for distraction. You can select them when the vehicle is stopped or use voice commands\*.

Wearing gloves may limit or prevent touchscreen response.

You can use a microfiber cleaning cloth to remove dust or fingerprints from the touchscreen.

*\*if equipped*

Notes for wireless and USB updating:

- If you select Install Now, the system will reboot. Do not operate the Display Audio unit during the software update. You will see a notice when the update is complete.
- If you select Install While Vehicle Off, you will see a notice when the update is complete when you start the vehicle.

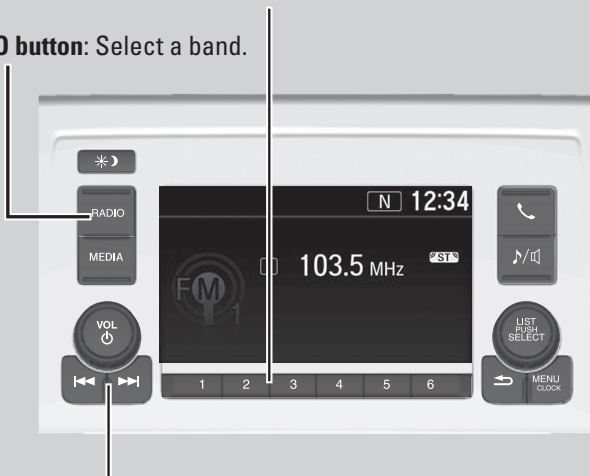
## FM/AM Radio

Play FM or AM radio stations.

**Models with color audio system**

**Preset buttons (1–6):** Press and hold a preset button to store the current station. Press a preset button to select a previously stored station.

**RADIO button:** Select a band.

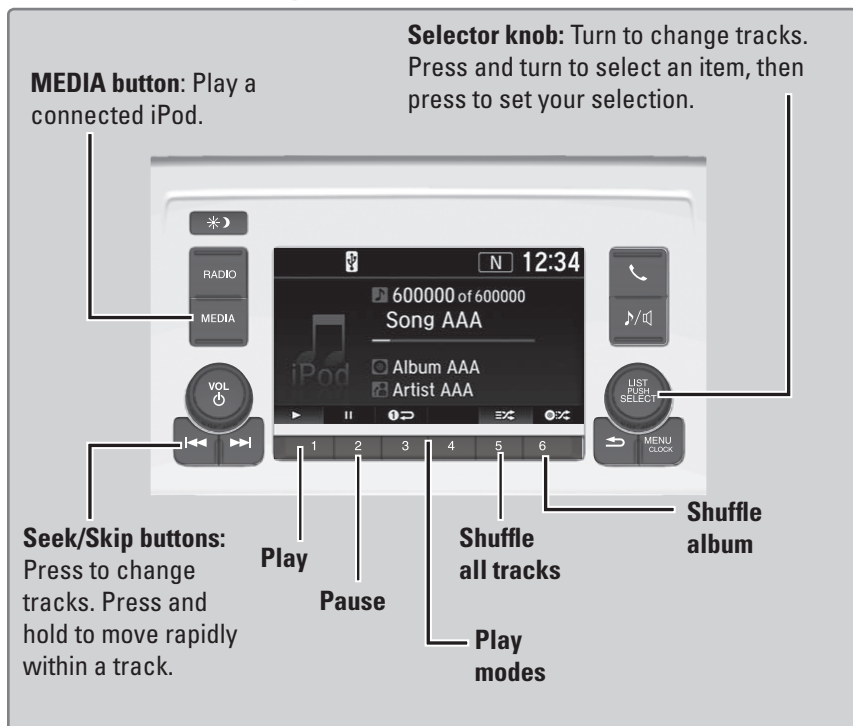


**Seek/Skip buttons:** Search up and down the selected band for a station with a strong signal.

## iPod®

Play and operate an iPod through the vehicle's audio system. Connect your device to the USB port (1.0A).

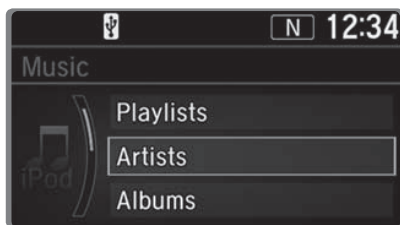
## Models with color audio system



## ■ Searching for Music

Use the selector knob to search for tracks stored on the iPod or USB flash drive.

1. From the audio screen, press SELECT.
2. Select a search option or folder.
3. Select the track you want to play.



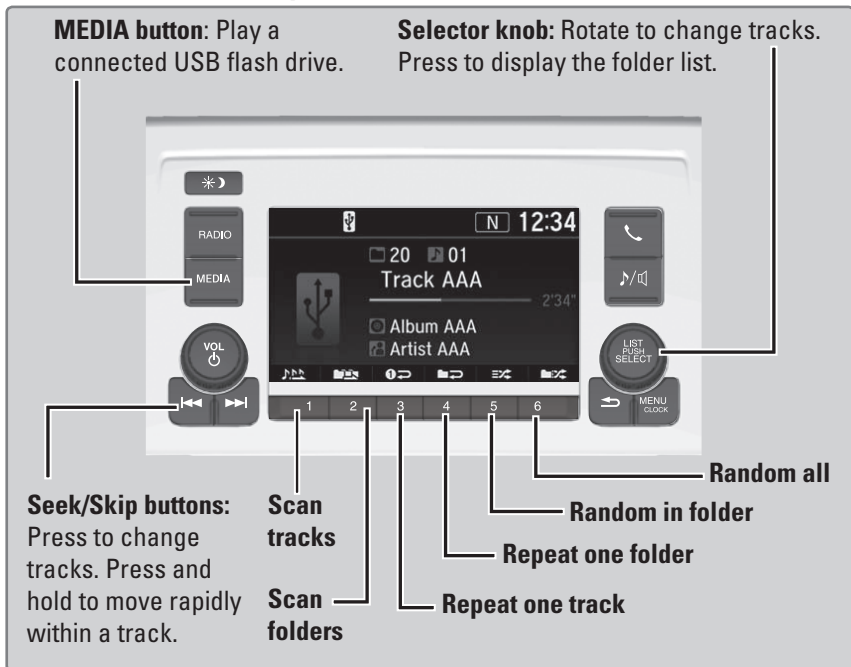
*iPod is a trademark of Apple, Inc.*



## USB Flash Drive

Play and operate a USB flash drive through the vehicle's audio system. Connect your device to the USB port (1.0A).

### Models with color audio system



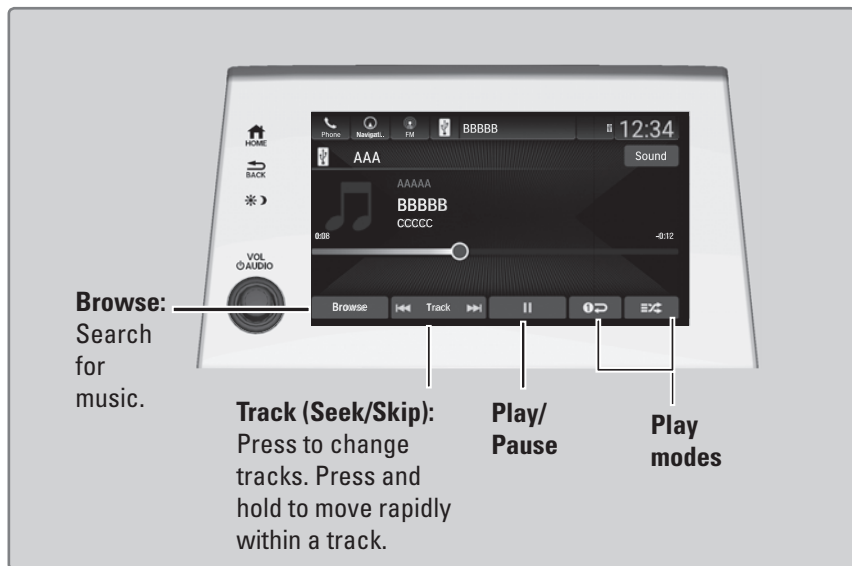
### ■ Searching for Music

Use the selector knob to search for tracks stored on the flash drive.

1. From the audio screen, press the selector knob.
2. Select a folder.
3. Select the track you want to play.



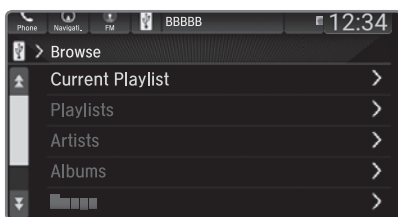
### Models with Display Audio



#### ■ Searching for Music

Use the touchscreen to search for tracks stored on the flash drive.

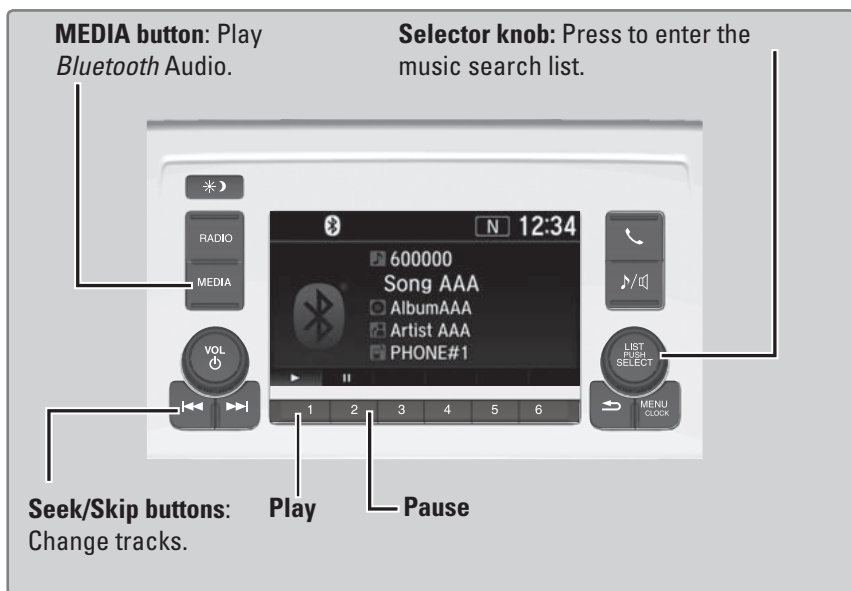
1. Select Browse.
2. Select from the items on that menu.



### Bluetooth® Audio

Play streaming or stored audio from your compatible phone through the vehicle's audio system. Visit [handsfreelink.com](http://handsfreelink.com) to check phone compatibility. Standard data rates apply with your phone service provider. Connect your phone to *Bluetooth* HandsFreeLink.

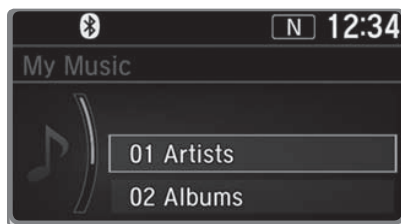
## Models with color audio system



### ■ Searching for Music

Use the selector knob to search for tracks stored on the device.

1. From the audio screen, press the selector knob.
2. Select a category.
3. Select the track you want to play.



*Applicable laws may prohibit the operation of handheld electronic devices while operating a vehicle. Launch streaming audio on your phone only when safe to do so.*

# BLUETOOTH® HANDSFREELINK® (HFL)

Learn how to operate the vehicle's hands-free calling system.

## Models with color audio system

### Basic HFL Operation

Make and receive phone calls using the vehicle's audio system, without handling your phone. Visit [handsfreelink.com](http://handsfreelink.com) to check phone compatibility.

**To reduce the potential for driver distraction, certain manual functions may be inoperable or grayed out while the vehicle is moving. Stop or pull over to perform the function.**

#### ■ HFL Controls

Use the controls to enter information and make selections.

**Hang-Up/Back button:** End or decline a call, or cancel an operation.

**Pick-Up button:** Go to the phone screen, or answer an incoming call.

**Talk button:** Make a call using a stored voice tag.



**PHONE button:** Display the phone screen.

**Selector knob:** Rotate and press to make selections.

**BACK button:** Go back to the previous display.

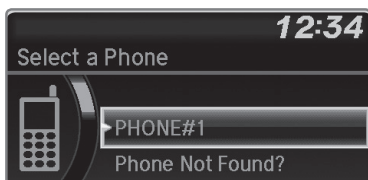
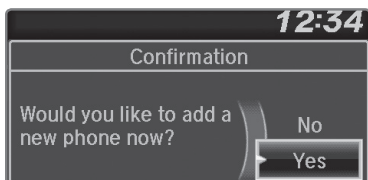
## Models with color audio system

### Pairing a Phone

To use hands-free phone and streaming audio functions, you must first pair your phone to the system. This can only be done when the vehicle is stopped. Use the selector knob to make and enter selections.

#### ■ Pairing the First Phone

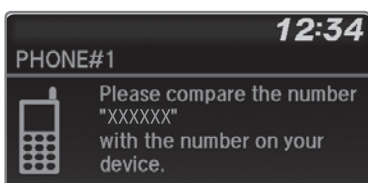
1. Press the Phone button to go to the Phone screen. A prompt appears. Select Yes.
2. Make sure your phone is in discovery mode. Select OK.



3. The system searches for your phone. Select your phone when it appears on the list.

*If your phone does not appear:*

Select Phone Not Found? and search for HandsFreeLink from your phone. Connect to HFL.



4. The system gives you a pairing code. Compare it to the code that appears on your phone. Connect to HFL from your phone. A notification appears on the screen if pairing is successful.

#### ■ Pairing an Additional Phone

1. Press the Phone button to go to the Phone screen. If a prompt appears asking to connect to a phone, select No.
2. Select Phone Setup.
3. Select Bluetooth Setup.
4. Select Add New Device.
5. Make sure your phone is in discovery mode. Select OK.



- The system searches for your phone. Select it when it appears on the list.  
If your phone does not appear: Select Phone Not Found?, and search for HandsFreeLink from your phone. Connect to HFL.
- The system gives you a pairing code. Enter it on your phone when prompted.



*Applicable laws may prohibit the operation of handheld electronic devices while operating a vehicle.*

### Models with color audio system

#### Making a Call

You can make a call using several methods.

##### ■ Dialing a Number

Enter a 10-digit phone number to call. Use the selector knob to make and enter selections. This method is inoperable while the vehicle is moving.

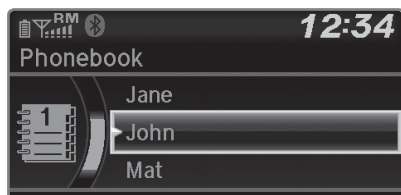
- Press the Phone button.
- Select Dial.
- Enter the phone number. Select the green phone icon to call.



##### ■ Using the Phonebook

When your phone is paired, its phonebook is automatically imported to the system. Use the selector knob to make and enter selections. This method is inoperable while the vehicle is moving.

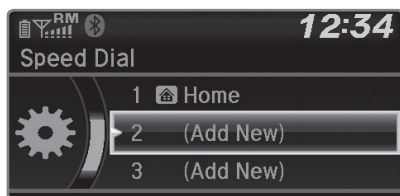
- Press the Phone button.
- Select Phonebook.
- Scroll through the alphabetical list to find the name and number you want to call, and select it to call.



## ■ Storing Speed Dial Entries

Store up to 20 numbers for quick dialing. Use the selector knob to make and enter selections.

1. Press the Phone button.
2. Select Speed Dial, then select Add New.
3. Select an entry method.
4. If desired, you can create a voice tag for the number. Follow the prompts.



## ■ Using Speed Dial

Make calls quickly using stored speed dial entries. Use the selector knob to make and enter selections.

1. Press the Phone button.
2. Select Speed Dial.
3. Scroll through the list to find the entry you want to call, and select it to call.



Speed dial entries with stored voice tags can be called using the Talk button. Press the Talk button and follow the prompts.

## Models with Display Audio

### Basic HFL Operation

Make and receive phone calls using the vehicle's audio system, without handling your phone. Visit [handsfreelink.com](http://handsfreelink.com) to check phone compatibility.

**To reduce the potential for driver distraction, certain manual functions may be inoperable or grayed out while the vehicle is moving. Stop or pull over to perform the function. Voice commands are also available.**

## ■ HFL Controls

Use the controls to enter information and make selections.