

## Using the Remote Transmitter

Lock or unlock the doors, tailgate and fuel-fill door. Start and stop the engine\*.

**Unlock button:** Press once to unlock the driver's door. Press again to unlock all doors.

**Tailgate button:** Press once to unlock the tailgate.

**Built-in key:** Slide the release knob on the back of the transmitter and pull out the built-in key.

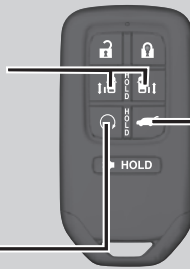


**Lock button:** Press to lock the doors and tailgate. Press again for audible verification.

**Panic button:** Press and hold to sound the alarm for 30 seconds. Press any button to cancel.

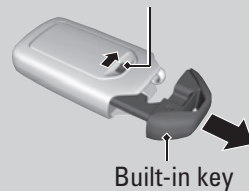
**Power sliding door buttons\*:** Press and hold to open the sliding door. Press again to stop the door during operation. Press again to close the door.

**Engine button\*:** After pressing the Lock button, press and hold to remotely start the engine



**Power tailgate button\*:** Press and hold to unlock and open the power tailgate. Press again to close it.

Release knob



Built-in key

### NOTICE

Leaving the key or remote transmitter in the vehicle can result in theft or accidental movement of the vehicle. Always take it with you whenever you leave the vehicle unattended.

*\*if equipped*

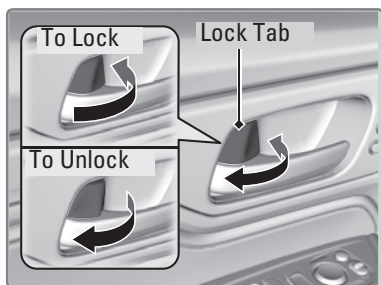
## Door Operation

Use several methods to lock or unlock the doors.

### ■ Using the Lock Tab

**To unlock:** When you unlock a front door using the lock tab, only that door unlocks.

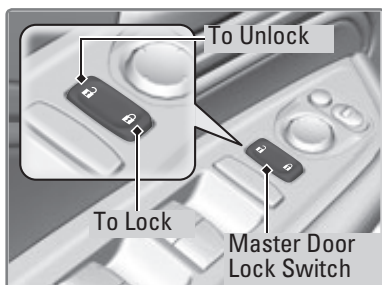
**To lock:** When you lock the driver's door using the lock tab, all the doors and tailgate lock at the same time.



### ■ Using the Master Door Lock Switch

**To unlock:** Press the unlock side of the switch to unlock all doors and the tailgate.

**To lock:** Press the lock side of the switch to lock all doors and the tailgate.

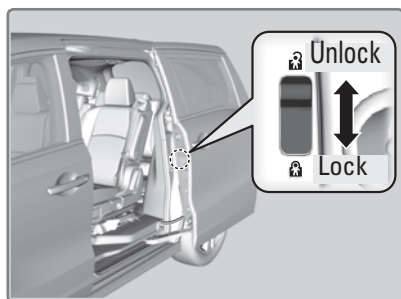


### ■ Childproof Door Locks

The childproof door locks prevent the rear doors from being opened from the inside, regardless of the position of the lock tab.

Slide the lever in the rear door to the lock position and close the door.

Open the door using the outer door handle.



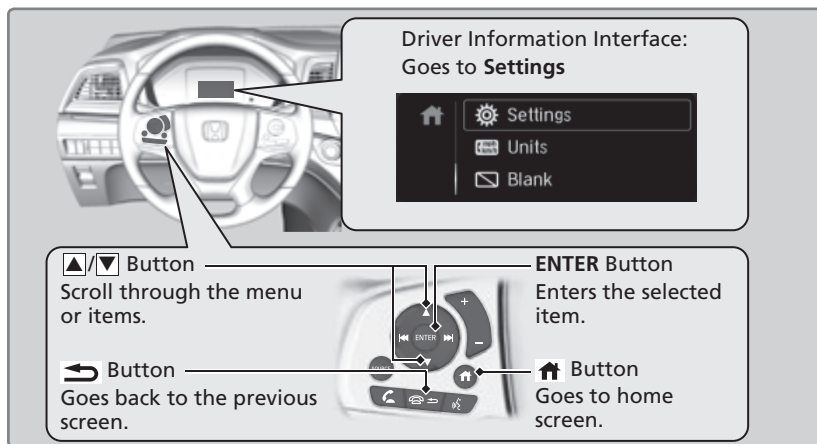
### ■ Customizing Door Lock/Unlock Settings

Customize the auto door-lock setting to your preference. Begin with the vehicle off.

#### Models with color audio

Begin with the vehicle stopped and the power mode set to ON. Use the ▲ / ▼ buttons to make selections, then press Enter.

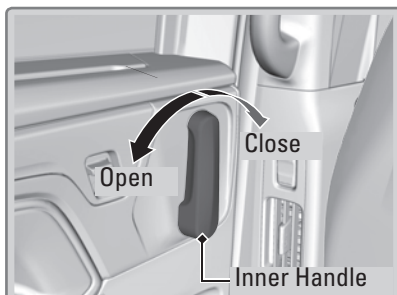
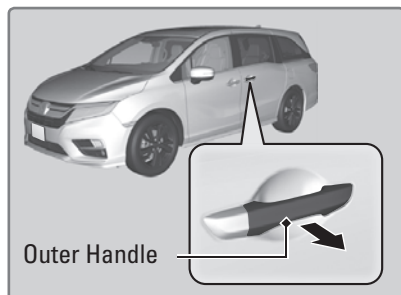
1. Press Home on the steering wheel.
2. Select Settings.
3. Select Vehicle Customization.
4. Select Door/Window Setup.
5. Select Auto Door Lock or Auto Door Unlock
6. Select an option.
  - The default for Auto Door Lock is With Vehicle Speed.
  - The default for Auto Door Unlock is All Doors When Driver's Door Opens.



## ■ Opening/Closing the Sliding Doors

From the outside, pull the outer door handle and slide the door all the way to the front or rear.

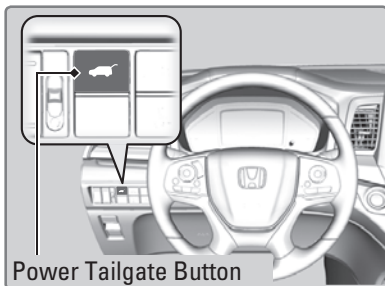
From the inside, grab the inner door handle and slide the door all the way to the front or rear.



### ■ Power Tailgate Button

The vehicle must be in Park (P) with all doors unlocked.

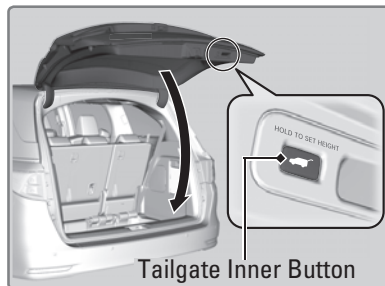
Press and hold the power tailgate button on the dashboard until the tailgate starts to open. Press it again to stop, or press and hold until it reverses.



### ■ Power Tailgate Inner Button

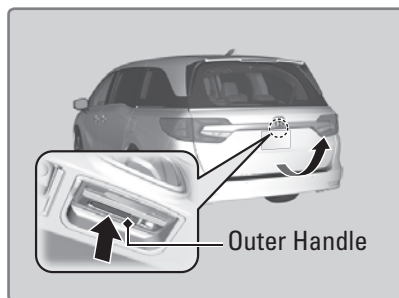
Press the tailgate inner button to automatically close the tailgate.

Press it again at any time to stop it. Press again to reverse the tailgate direction.



### ■ Manual Opening

Press and hold the tailgate outer handle longer than one second. The tailgate unlatches and you can open it manually.



## ⚠ WARNING

Closing the power tailgate while anyone is in the path of the tailgate can cause serious injury.

Make sure everyone is clear before closing the tailgate.

## NOTICE

Do not push or pull on the power tailgate when it is being automatically opened or closed. Forcibly opening or closing the power tailgate while in operation can deform the tailgate frame.