

### ■ Customizing Door Lock and Unlock Settings

Customize the auto door lock and door unlock settings to your preference. Begin with the vehicle off.

#### Models with Color Audio

1. Press the **MENU/CLOCK** button, then select **Settings**.
2. Select **Vehicle Settings**.
3. Select **Door/Window Setup**.
4. Select **Auto Door Lock** or **Auto Door Unlock** then select an option.

#### Models with Display Audio

1. Select **Home**.
2. Select **Settings**.
3. Select **Vehicle**.
4. Select **Door/Window Setup**.
5. Select **Auto Door Lock** or **Auto Door Unlock** then select an option.

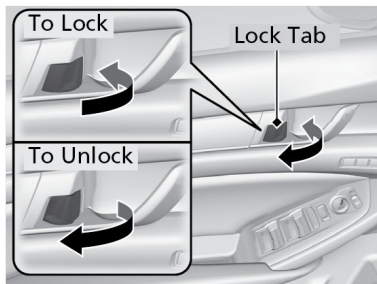
## Door Operation

Use several methods to lock or unlock the doors.

### ■ Using the Lock Tab

**To unlock:** When you unlock either front door using the lock tab, the specific door (driver's or passenger's) unlocks.

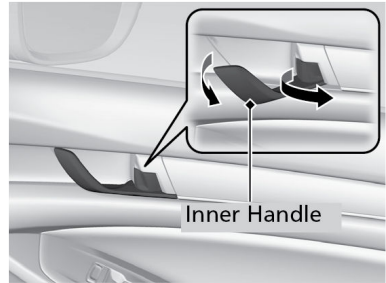
**To lock:** When you lock the door using the lock tab on the driver's door, all the other doors and the trunk lock at the same time. When you lock the door using the lock tab on the front passenger's door, only that door locks.



### ■ Using the Front Door Inner Handle

Pull the front door inner handle. The door unlocks and opens in one motion. Unlocking and opening the driver's door from the inner handle unlocks all other doors and trunk.

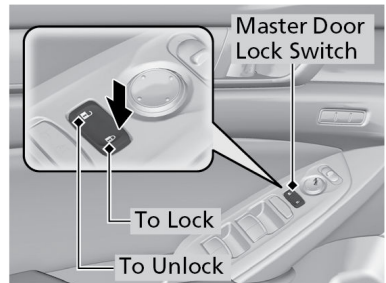
Do not pull a front door inner handle while the vehicle is moving.



### ■ Using the Master Door Lock Switch

**To unlock:** Press the unlock side of the switch to unlock all doors and the trunk.

**To lock:** Press the lock side of the switch to lock all doors and the trunk.



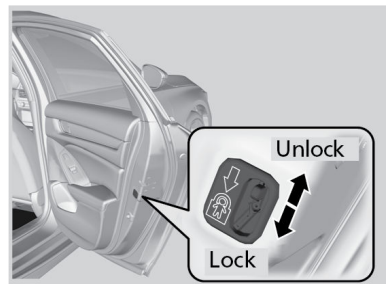
### ■ Childproof Door Locks

The childproof door locks prevent the rear doors from being opened from the inside regardless of the position of the lock tab.

Slide the lever in the rear door to the lock position, and close the door.

Open the door using the outer door handle.

**Note:** To open the door from the inside when the childproof door lock is on, put the lock tab in the unlock position, lower the rear window, put your hand out of the window, and pull the outside door handle.



## VEHICLE CONTROLS

---

### ■ Using the Trunk Opener

Press and hold the trunk opener button on the driver's door to unlock and open the trunk.

