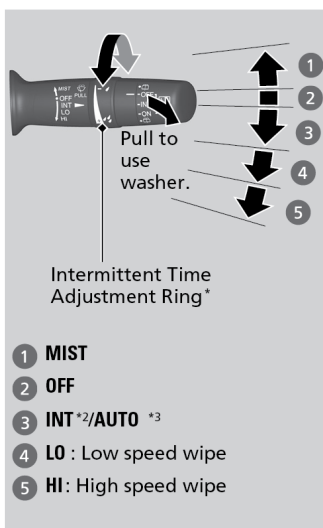


## Wiper Operation

The windshield wipers and washers can be used when the vehicle is on.

### ■ Front Wipers

Move the wiper lever up or down to the desired position.



\*2: Models with manual intermittent operation

\*3: Models with automatic intermittent operation

\* Not available on all models

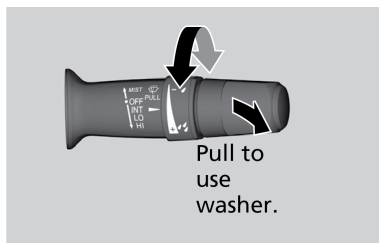
### ■ Headlight Integration with Wipers

When the headlights are in the **AUTO** position, they automatically turn on when the front wipers operate several times within a certain interval. The headlights turn off shortly after the wipers are turned off or if there is enough ambient light.

### ■ Intermittent (INT) Wipers\*<sup>1</sup>

When you move the lever to the INT position, the wipers operate based on the delay adjustment.

Rotate the adjustment ring to adjust the wiper delay.

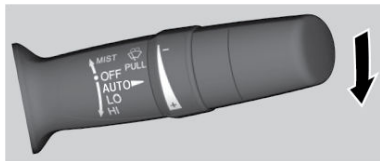


\*1 - If equipped

### ■ Automatic Intermittent Wipers\*1

When you move the lever to the AUTO position while driving in rainy weather, the wipers operate based on the amount of detected rainfall.

Rotate the adjustment ring to adjust the rainfall sensor sensitivity. Set the wipers to OFF when the rain stops.



### **NOTICE**

Ensure the wiper lever is in the OFF position before entering a car wash or cleaning the windshield. Wiper-system damage may happen otherwise.

### **NOTICE**

Do not use the wipers when the windshield is dry. The windshield will get scratched, or the rubber blades will get damaged.

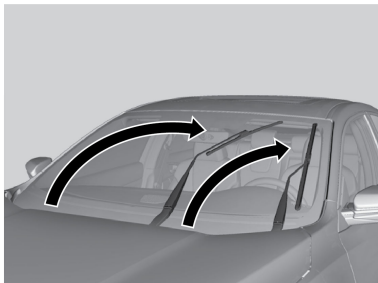
In cold weather, the blades may freeze to the windshield, becoming stuck. Operating the wipers in this condition may damage the wipers. Use the defroster to warm the windshield, or manually clear the windshield of ice and snow before turning on the wipers.

*\*1 - If equipped*

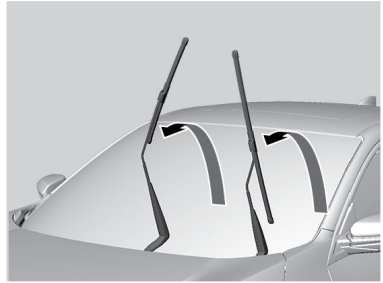
### Changing Wiper Blades

If the wiper blades leave streaks across the windshield, try cleaning them first with a paper towel or soft cloth and wiper fluid. If the wiper blade rubber has deteriorated, you should change the wiper blades.

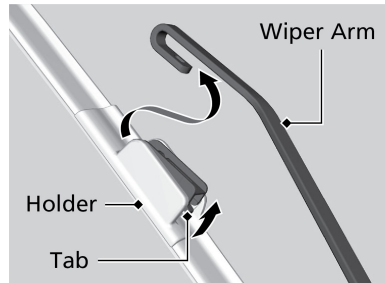
1. Set the power mode to VEHICLE OFF(LOCK).
2. While holding the wiper switch in the MIST position, turn the ignition switch to ON, then to LOCK. Both wiper arms are now set to the maintenance position.



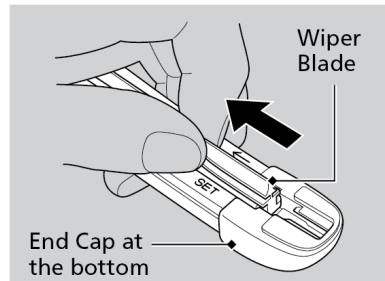
3. Lift the driver side wiper arm first, then the passenger side.



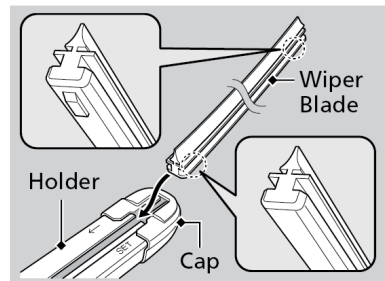
4. Press and hold the tab, then slide the holder off the wiper arm.



5. Pull the end of the wiper blade to the direction of the arrow in the image until it unfastens from the holder's end cap. Pull the wiper blade to the opposite direction to slide it out from its holder.



6. Insert the flat side of the new wiper blade onto the bottom part of the holder. Insert the blade all the way.
7. Install the end of the wiper blade into the end cap.
8. Slide the wiper holder onto the wiper arm securely.
9. Lower the passenger side wiper arm first, then the driver side.



10. Set the power mode to ON and hold the wiper switch in the MIST positions until both wiper arms return to the standard position.

## NOTICE

Avoid dropping the wiper arm, as it may damage the windshield.