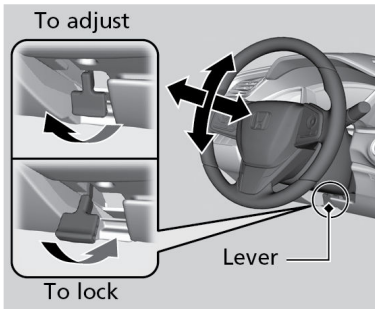


Adjusting the Steering Wheel

The steering wheel height and distance from your body can be adjusted so that you can comfortably grip the steering wheel in an appropriate driving posture.

1. Pull the steering wheel adjustment lever up.
2. Move the steering wheel up, down, in, or out.
3. Push the steering wheel adjustment lever down to lock the steering wheel in position.



⚠ WARNING

Adjusting the steering wheel position while driving may cause you to lose control of the vehicle and be seriously injured in a crash.

Adjust the steering wheel only when the vehicle is stopped.