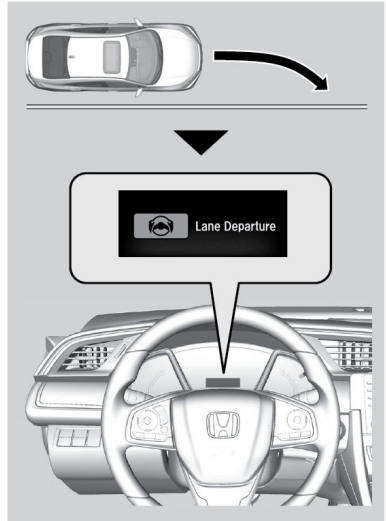


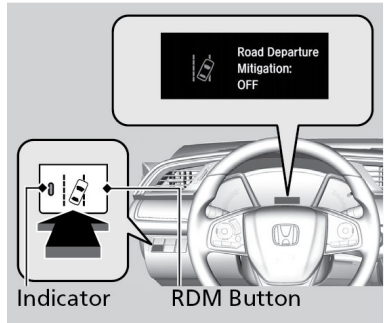
## Road Departure Mitigation (RDM)\*1

Alerts and helps to assist you if the system determines a possibility of your vehicle unintentionally crossing over detected lane markings and/or leaving the roadway altogether while driving between 45-90 mph (72-145km/h).



### ■ Turning the System On or Off

Press the RDM button to turn the system on or off. A green indicator appears on the button when the system is on.



### ■ Changing Settings

1. From the HOME screen, select Settings.
2. Select Vehicle.
3. Select Driver Assist System Setup.
4. Select Road Departure Mitigation Setting.
5. Select from the options.
6. Press Save.

\*1 - If equipped

- **Important Safety Reminder**

The RDM system has limitations. Over-reliance on it may result in a collision. It is always your responsibility to keep your vehicle within the driving lane.

*\*1 - If equipped*