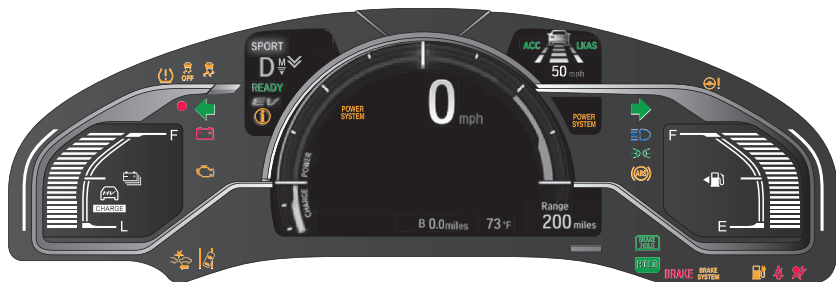


INSTRUMENT PANEL

Learn about the indicators, gauges, and displays related to driving the vehicle.



Indicators briefly appear with each power system start and then go out. Red and amber indicators are most critical. Blue and green indicators are used for general information.

Malfunction Indicators

These are the most critical indicators. If they come on and stay lit while driving or at any other time, there may be a problem. See your authorized Honda Clarity Plug-In Hybrid dealer if necessary.

BRAKE Brake system

- Brake fluid is low.
- There is a malfunction in the brake system.

U.S.



Canada

Press the brake pedal lightly to check pedal pressure. If normal, check the brake fluid level when you stop. If abnormal, take immediate action. If necessary, downshift the transmission to slow the vehicle using engine braking. Have your vehicle repaired immediately.



Charging system

The 12-volt battery is not charging. Turn off all electrical items, but do not turn off the vehicle to prevent further battery discharge. Have your vehicle repaired immediately.



Supplemental Restraint System (SRS)

There is a problem with one of the airbag systems or seat belt tensioners.

**Anti-lock Brake System (ABS)**

There is a problem with the anti-lock brake system. Your vehicle still has normal braking ability, but no anti-lock function.

**Tire Pressure Monitoring System (TPMS)**

(Blinks and stays on) There is a problem with the tire pressure monitoring system or a tire has low pressure.

**Collision Mitigation Braking System (CMBS)**

There is a problem with the system, the temperature is too high, or the camera is blocked.

**Vehicle Stability Assist (VSA)**

There is a problem with the VSA system.

**Brake system**

There is a problem with the brake system, not related to the conventional brake system.

**Electric Power Steering (EPS)**

There is a problem with the EPS system.

**Adaptive Cruise Control (ACC) with Low Speed Follow (LSF)**

There is a problem with the system, the temperature is too high, or the radar sensor is blocked.

**Lane Keeping Assist System (LKAS)**

There is a problem with the system.

**Road Departure Mitigation (RDM)**

There is a problem with the system.

**Transmission Malfunction Indicator**

The indicated current gear selection or all the gear positions blink if there is a problem with the transmission system.

**Immobilizer**

Your key or remote transmitter cannot be recognized by the vehicle. If the indicator blinks, you may not be able to start the power system. Turn the vehicle off and then on again. If it continues to blink, there may be a problem with the system. See your authorized Honda Clarity Plug-In Hybrid dealer.

**Keyless Access system**

There is a problem with the keyless access system.

Condition Indicators

These indicators may require you to perform an action.

BRAKE

Parking brake

The brake fluid is low, the parking brake is applied, or there is a problem with the brake system.

U.S.



Canada



Seat belt reminder

Make sure seat belts are fastened for you and all passengers. The indicator blinks and beeps sound continuously if you or your front passenger has not fastened your seat belts when you begin driving. If the indicator remains on after seat belts are fastened, see an authorized Honda Clarity Plug-In Hybrid dealer.



Low fuel

Refuel as soon as possible. If the indicator blinks, there is a problem with the fuel gauge. See your authorized Honda Clarity Plug-In Hybrid dealer.



Low tire pressure

Stop in a safe place, check tire pressures, and inflate tire(s) if necessary. Have your tire repaired or replaced as soon as possible.



System message

When a condition or malfunction indicator comes on, a message also appears on the driver information interface. Check the display for more information.

READY

Ready

The vehicle is ready to drive.

POWER SYSTEM

Power System

There is a problem with the power system or plug-in charging system. Have your vehicle checked by an authorized Honda Clarity Plug-In Hybrid dealer immediately.



Door/trunk open

Close any open doors or the trunk. A beep sounds if any doors or the trunk is opened while driving.

On/Off Indicators

These indicators remind you when an item is on or off.



VSA off



VSA engaged (blinks)



CMBS off



Turn signals/hazards on



High beams on



Exterior lights on

SPORT

SPORT mode on



ECON mode on

LKAS

LKAS on

ACC

ACC on



Brake hold system on



Brake hold system activated



EV on



HV on



HV charging active