

# AUDIO AND CONNECTIVITY

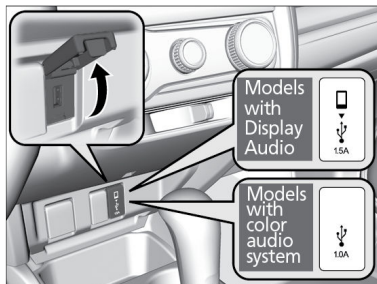
Learn how to operate the vehicle's audio system.

## Basic Audio Operation

Connect audio devices and operate buttons and displays for the audio system.

### ■ USB Port

Open the USB cover in the front console.



#### Models with Display Audio

The USB port (1.5A) is for charging devices, playing audio files and connecting compatible phones with Apple CarPlay or Android Auto.

An additional USB port is located inside the center console.\*

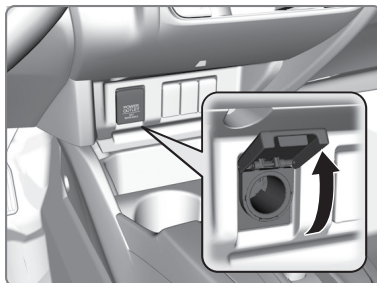
### ■ Accessory Power Socket

Open the socket cover to use power when the vehicle is on.

An additional power socket is located in the center console\*<sup>1</sup>.

#### NOTICE

Do not insert an automotive type cigarette lighter element. This can overheat the power socket.



\*1 - If equipped

### ■ Audio Remote Controls\*1

You can operate certain functions of the audio system using the steering wheel controls.

**SOURCE button:** Cycle through available audio modes.

**</> : buttons:** Change presets, tracks, albums, or folders.

**+/- buttons:** Adjust audio volume.

**Menu button:** From the audio screen, press to choose options for the current audio mode (Models with Display Audio). Use the +/- buttons and the SOURCE button to scroll and enter selections.

Press and hold : > or < for the next or previous strong station.



CD\*1/iPod/USB/Bluetooth® Audio

Press : > or < for the next or previous track.

CD\*1/USB Flash Drive

Press and hold : > or < for the next or previous folder (CD/USB).

Pandora®\*13

Press Menu: To display the menu items. You can select Bookmark, or Play/Pause.

### ■ Adjusting the Sound

Adjust various sound settings.

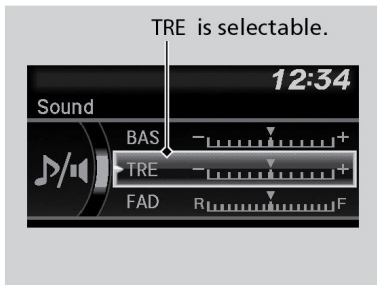
*\*1 - If equipped*

*\*13 - US models only, if equipped*

### Models with Display Audio

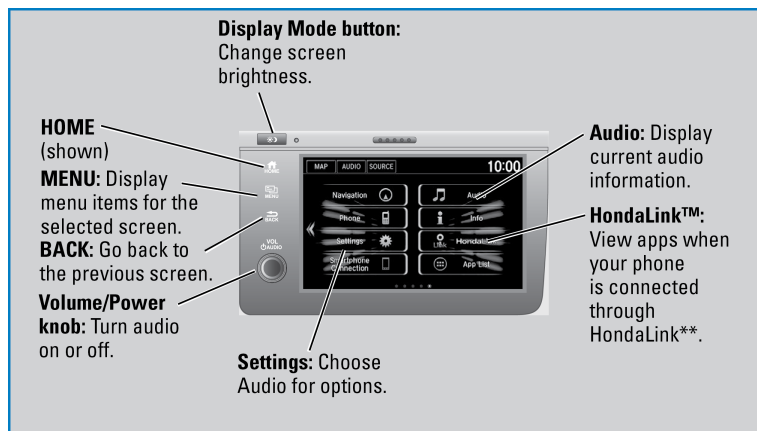
Make selections using the touchscreen

1. From the HOME screen, select Settings.
2. Select Sound.
3. Select the tabs to change the sound mode and adjust the setting.
4. Select OK when complete.



### Display Audio System

Use simple gestures-including touching, swiping and scrolling-to operate certain audio functions.



Some items may be grayed out during driving to reduce the potential for distraction. You can select them when the vehicle is stopped or use voice commands.

Wearing gloves may limit or prevent touchscreen response.

## HondaLink®

### Models with Display Audio

Provides you with useful information about your vehicle directly from Honda.

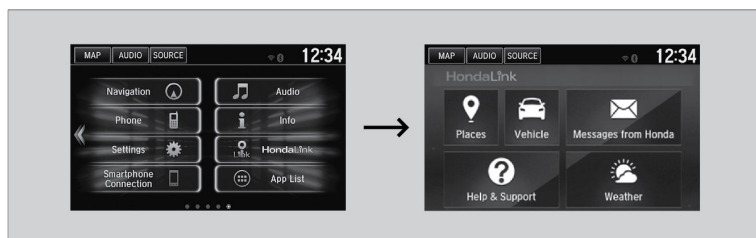
To check phone compatibility, visit [handsfreelink.com](http://handsfreelink.com) (US) or [handsfreelink.ca](http://handsfreelink.ca) (Canada). Standard data rates may apply with your phone service provider.

To get more information on HondaLink, visit [www.hondalink.com](http://www.hondalink.com) (U.S.) or [honda.ca/hondalink](http://honda.ca/hondalink) (Canada).

### ■ HondaLink Menu

Select a menu option.

**Places\*1:** Displays restaurants, gas stations, and other locations. You can send a location to the navigation system and set a route.



\*1 - If equipped