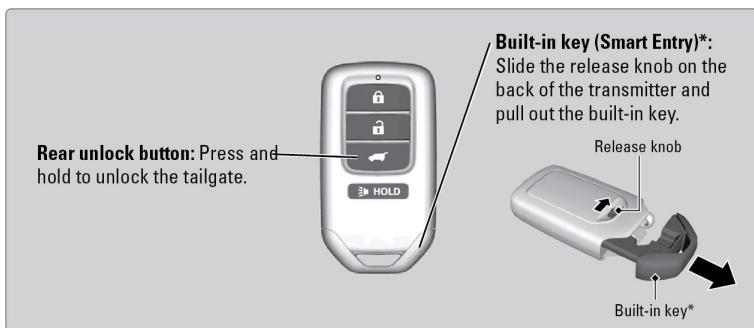
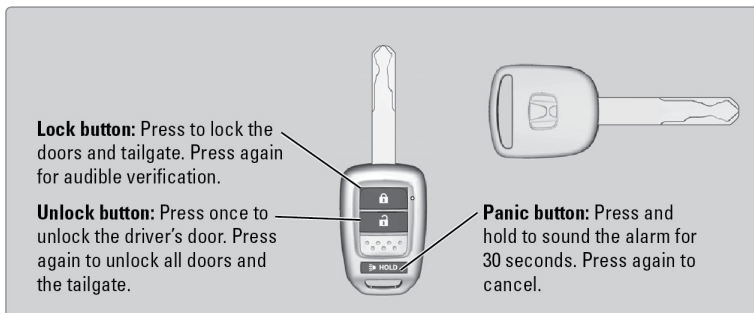


VEHICLE CONTROLS

Learn about the various controls necessary for operating and driving the vehicle.

Using the Key or Remote Transmitter

Lock or unlock the doors, and trunk.



NOTICE

Leaving the remote transmitter in the vehicle can result in theft or accidental movement of the vehicle. Always take it with you whenever you leave the vehicle unattended.

Smart Entry System*¹

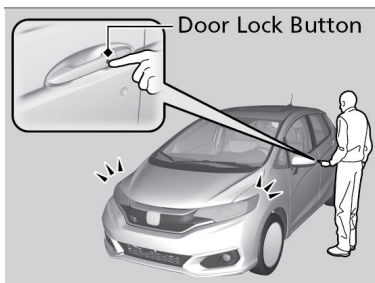
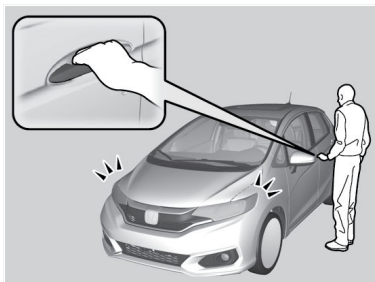
When you carry the remote transmitter (for example, in a pocket or purse) and it is outside the vehicle and within range (about 32 inches or 80 cm), you can lock or unlock the doors, without handling the transmitter.

**1 - If equipped*

■ Unlocking/Locking the Doors

To unlock: Grab the driver's door handle to unlock the driver's door. Grab the front passenger's door handle to unlock all the doors. You can customize this feature's behavior.

To lock: Press the door lock button on the front door or the tailgate.



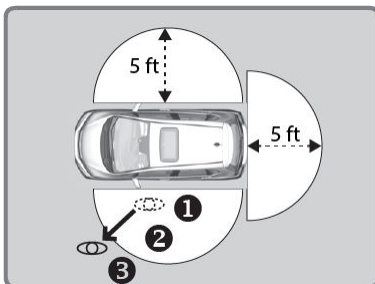
■ Walk Away Auto Lock

When you walk away from the vehicle while carrying the remote transmitter, the doors can automatically lock if the following conditions are met:

- The remote transmitter is within a range of 5 feet (1.5 m).
- All doors and the trunk are closed.
- There is not an additional remote transmitter inside the vehicle.

Follow these steps:


1. Exit the vehicle, close the door and stay near it. Listen for a beep. The system is activated.
2. Walk at least 5 feet (1.5 m) away.
3. Listen for a beep and look for the lights to flash. The doors lock.



■ Customizing Door Lock & Unlock Settings

Customize the auto door lock and door unlock settings to your preference. Begin with the vehicle off.

Customizing Door Lock Settings


Steps	Drive Lock Mode ^{*1}	Off
1	Apply the parking brake. Continuously variable transmission models Move the shift lever to P .	
2	The driver's door must be closed at this stage.	Open the driver's door.
3	Turn the ignition switch to ON ^{*2} . Push the ENGINE START/STOP button twice without depressing the brake pedal ^{*3} .	
4	Continuously variable transmission models Move the shift lever out of P with the brake pedal depressed.	—
5	Press and hold the front of the master door lock switch on the driver's door. You will hear a click more than five seconds elapsed. Release the switch. 	
6	Continuously variable transmission models Move the shift lever to P .	—
7	Turn the ignition switch to OFF within 20 seconds ^{*2} . Push the ENGINE START/STOP button once without depressing the brake pedal ^{*3} . <ul style="list-style-type: none"> ⌵ Customization is completed. ⌵ All doors unlock and all turn signals blink three times. 	

*1: Default setting

*2: Models without smart entry system

*3: Models with smart entry system

Customizing Door Unlock Settings

Steps	Driver Door Open Unlock Mode ^{*1}	Continuously variable transmission models Park Unlock Mode	Off
1	Apply the parking brake. Continuously variable transmission models Move the shift lever to P .		
2	The driver's door must be closed at this stage.		Open the driver's door.
3	Continuously variable transmission models Move the shift lever out of P with the brake pedal depressed.		—
4	Turn the ignition switch to ON ^{*2} . Push the ENGINE START/STOP button twice without depressing the brake pedal ^{*3} .		
5	Press and hold the rear of the master door lock switch on the driver's door. You will hear a click more than five seconds elapsed. Release the switch. 		
6	Continuously variable transmission models Move the shift lever to P .		—
7	Turn the ignition switch to OFF within 20 seconds ^{*2} . Push the ENGINE START/STOP button once without depressing the brake pedal ^{*3} . <ul style="list-style-type: none"> ⌵ Customization is completed. ⌵ All doors lock and all turn signals blink three times. 		

*1: Default setting

*2: Models without smart entry system

*3: Models with smart entry system

Door Operation

Use several methods to lock or unlock the doors.

■ Using the Lock Tab

To unlock: When you unlock either front door using the lock tab, the specific door (driver's or passenger's) unlocks.

To lock: When you lock the door using the lock tab on the driver's door, all the other doors lock at the same time. When you lock the door using the lock tab on the front passenger's door, only that door locks.

■ Using the Front Door Inner Handle

When you pull either front door inner handle, the door unlocks and opens.

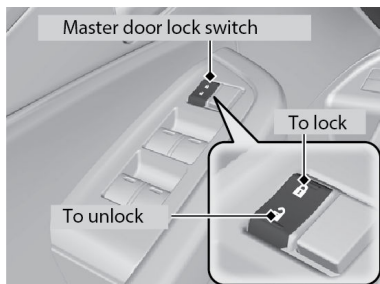
Unlocking and opening the driver's door from the inner handle unlocks all the other doors and the trunk.



■ Using the Master Door Lock Switch

To unlock: Press the unlock side of the switch to unlock all doors and the tailgate.

To lock: Press the lock side of the switch to lock all doors and the tailgate.

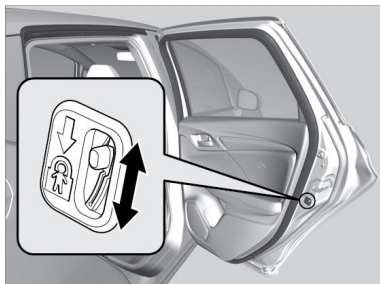


■ Childproof Door Locks

The childproof door locks prevent the rear doors from being opened from the inside regardless of the position of the lock tab.

Slide the lever in the rear door to the lock position, and close the door.

Open the door using the outer door handle.



Tailgate Operation

Use these methods to operate the tailgate.

■ Opening the Tailgate

Models without smart entry system

Pull up the tailgate outer handle and lift up the tailgate to open it.



Models with smart entry system

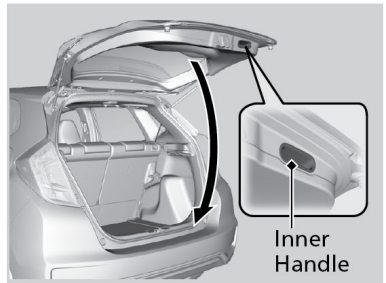
Press the tailgate release button and lift up the tailgate to open it.



■ Closing the Tailgate

Grab the inner handle and pull the tailgate down.

Push it closed from the outside.



Power Window Operation

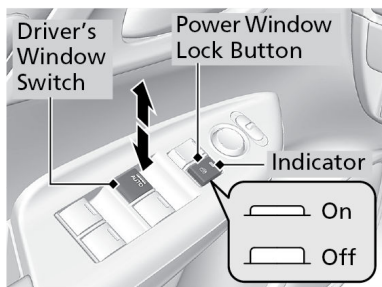
The power windows can be opened and closed by using the switches on the doors when the vehicle is on. The switches on the driver's side can be used to open and close all the windows.

Automatic Operation

To open: Push the switch down firmly.

To close: Pull the switch up firmly.

The window opens or closes completely. To stop the window at any time, push or pull the switch again briefly.



Manual Operation

To open: Push the switch down lightly.

To close: Pull the switch up lightly.

Release the switch when the windows reach the desired position.

Power Window Lock

Push in the power window lock button so only the driver's window can be operated.

⚠ WARNING

Closing a power window on someone's hands or fingers can cause serious injury.

Make sure your passengers are away from the windows before closing them.