

### HondaLink®

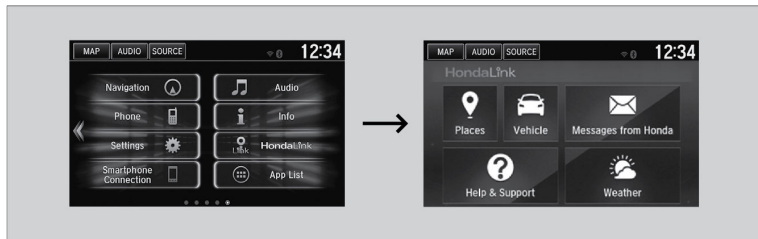
#### Models with Display Audio

Provides you with useful information about your vehicle directly from Honda. To check phone compatibility, visit [handsfreelink.com](http://handsfreelink.com) (US) or [handsfreelink.ca](http://handsfreelink.ca) (Canada). Standard data rates may apply with your phone service provider. To get more information on HondaLink, visit [www.hondalink.com](http://www.hondalink.com) (U.S.) or [honda.ca/hondalink](http://honda.ca/hondalink) (Canada).

#### ■ HondaLink Menu

Select a menu option.

**Places\*1:** Displays restaurants, gas stations, and other locations. You can send a location to the navigation system and set a route.



\*1 - If equipped

**Vehicle:** Get instructional messages when your vehicle needs service.

**Messages from Honda:** Displays helpful and important information from Honda.

**Help & Support:** Displays tips for vehicle usage, get roadside assistance, or contact customer service.

**Weather\*1:** Displays a weekly five-day weather forecast for any location.

## ■ HondaLink Connection

Follow the steps below to connect to HondaLink and use its features.

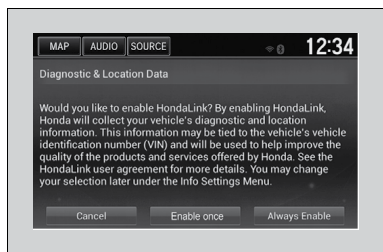
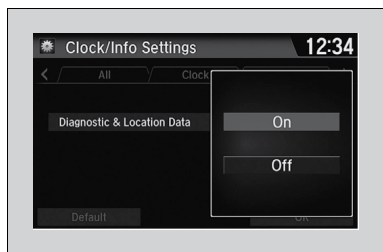
1. Select Home.
2. Select Settings.
3. Select Clock/Info.
4. Select the HondaLink tab.
5. Select Diagnostic & Location Data.
6. Select On.

You need to allow the consent of the location service to enable the HondaLink® service.

**Enable once:** Allows only one time.  
(Prompt shows again next time.)

**Always Enable:** Allows anytime.  
(Prompt does not show again.)

**Cancel:** Does not allow this consent.



\*1 - If equipped