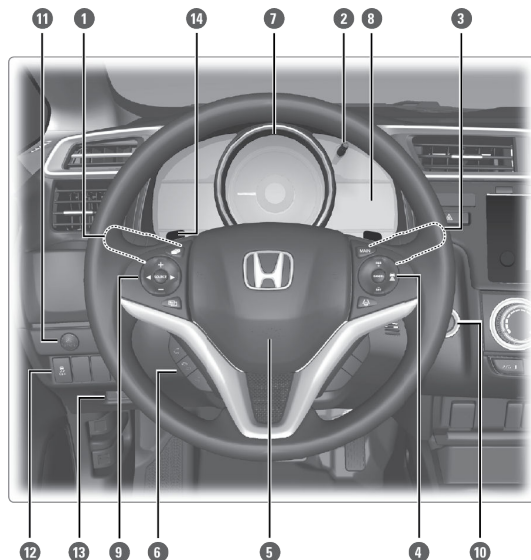


# VISUAL INDEX

Quickly locate items in the vehicle's interior.

## Steering Wheel and Nearby Controls



- |  |  |
|--|--|
| <p><b>1</b> Lights/turn signals/LaneWatch™ button*<sup>1</sup></p> <p><b>2</b> Select/Reset knob<br/>Brightness control</p> <p><b>3</b> Wipers/washers</p> <p><b>4</b> Cruise control buttons*<sup>1</sup><br/>Adaptive Cruise Control (ACC) buttons*<sup>1</sup><br/>Lane Keeping Assist (LKAS) button*<sup>1</sup></p> <p><b>5</b> Horn</p> <p><b>6</b> Bluetooth® HandsFreeLink®/voice control buttons</p> <p><b>7</b> Instrument panel</p> | <p><b>8</b> Information display<br/>Multi-information display*<sup>1</sup></p> <p><b>9</b> Audio remote control buttons*<sup>1</sup><br/>Display button*<sup>1</sup></p> <p><b>10</b> ENGINE START/STOP button*<sup>1</sup></p> <p><b>11</b> ECON button*<sup>1</sup></p> <p><b>12</b> Vehicle Stability Assist® (VSA®) button<br/>Collision Mitigation Braking System™ (CMBS™) OFF button*<sup>1</sup><br/>Road Departure Mitigation System (RDM) button*<sup>1</sup></p> <p><b>13</b> Tire Pressure Monitoring System (TPMS) button*<sup>1</sup></p> <p><b>14</b> Paddle shifters*<sup>1</sup></p> |
|--|--|

*\*1 - If equipped*

### ■ Audio Remote Controls\*1

You can operate certain functions of the audio system using the steering wheel controls.

**SOURCE button:** Cycle through available audio modes.

**</> : buttons:** Change presets, tracks, albums, or folders.

**+/- buttons:** Adjust audio volume.

**Menu button:** From the audio screen, press to choose options for the current audio mode (Models with Display Audio). Use the +/- buttons and the SOURCE button to scroll and enter selections.



Press and hold : > or < for the next or previous strong station.

CD\*1/iPod/USB/Bluetooth® Audio

Press : > or < for the next or previous track.

CD\*1/USB Flash Drive

Press and hold : > or < for the next or previous folder (CD/USB).

Pandora®\*13

Press Menu: To display the menu items. You can select Bookmark, or Play/Pause.

*\*1 - If equipped*

*\*13 - US models only, if equipped*

# BLUETOOTH® HANDSFREELINK®

Learn how to operate the vehicle's hands-free calling system.

## Basic HFL Operation

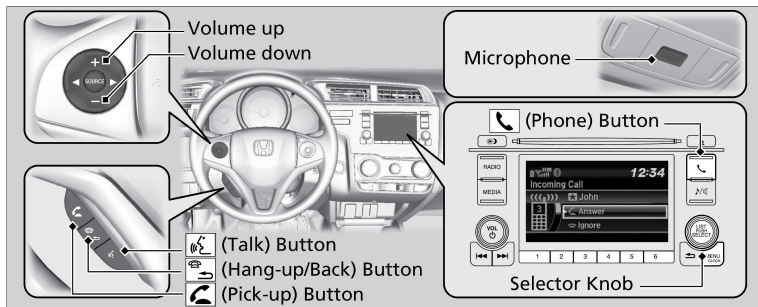
Make and receive phone calls using the vehicle's audio system, without handling your phone. Visit [automobiles.honda.com/handsfreelink/\(U.S.\)](http://automobiles.honda.com/handsfreelink/(U.S.)) or phone (888) 528-7876 (Canada) to check phone compatibility.

To reduce the potential for driver distraction, certain manual functions may be inoperable or grayed out while the vehicle is moving. Voice commands are always available.

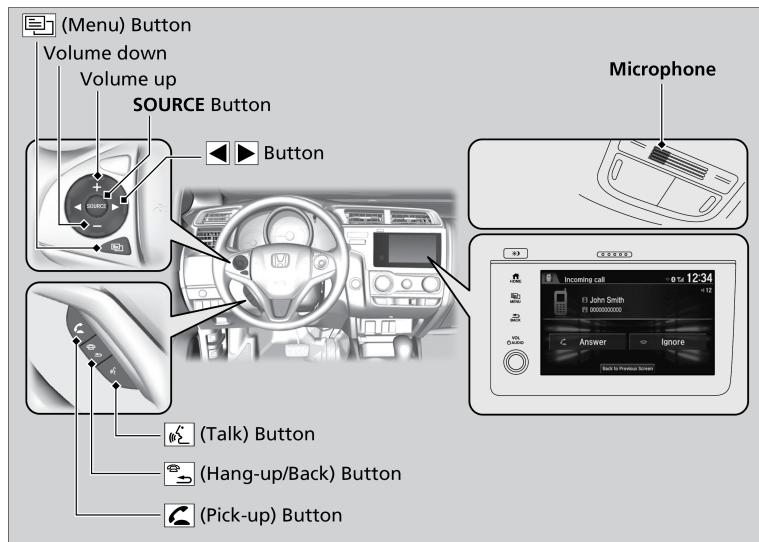
### ■ HFL Displays and Controls

Use the controls to enter information and make selections.

#### Models with Color Audio



## Models with Display Audio



### ■ Talk Button Tips

When using the Talk button, wait for the beep before saying a command. The system recognizes only the commands listed in the Voice Command Index.

- Aim the vents away from the ceiling and close the windows, as noise coming from them may interfere with the microphone.
- Press and release the talk button when you want to call a number using a stored voice tag. Speak clearly and naturally after a beep.
- If the microphone picks up voices other than yours, the command may be misinterpreted.
- To change the volume level, use the audio system's volume knob or the remote audio controls\*1 on the steering wheel.

\*1 - If equipped

*Applicable laws may prohibit the operation of handheld electronic devices while operating a vehicle.*