

AUDIO AND CONNECTIVITY

Learn how to operate the vehicle's audio system.

Basic Audio Operation

Connect audio devices and operate buttons and displays for the audio system.

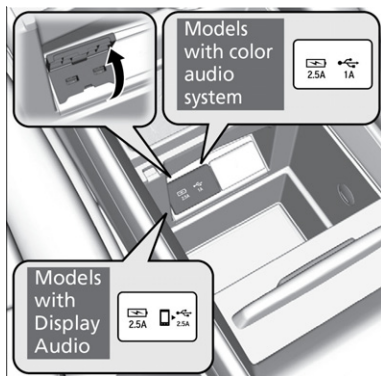
■ USB Port

Connect a USB flash drive or other audio device, such as an iPod® or iPhone®*14. Install the flash drive or cable connector to the USB port.

Models with Color Audio

The right-side port (1.0A) is for playing audio, connecting a phone, and device charging.

The left-side port (2.5A) is for device charging only.



*14 - iPod and iPhone are trademarks of Apple, Inc.

■ Accessory Power Socket

Open the socket cover to use power when the vehicle is on.

Power sockets are located in the front console and the driver's side rear cargo area and the third-row seat*¹.

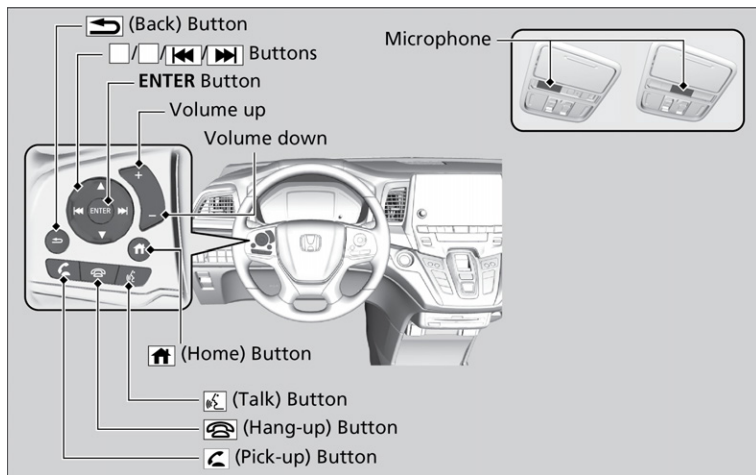


NOTICE

Do not insert an automotive type cigarette lighter element. This can overheat the power socket.

■ Audio Remote Controls*¹

You can operate certain functions of the audio system using the steering wheel controls.



■ Adjusting the Sound

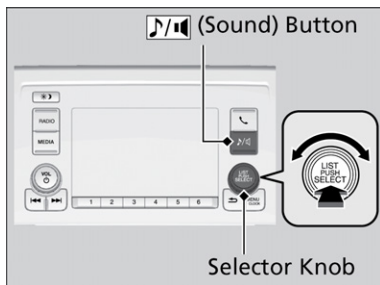
Adjust various sound settings.

Models with Color Audio

Use the selector knob to make and enter selections.

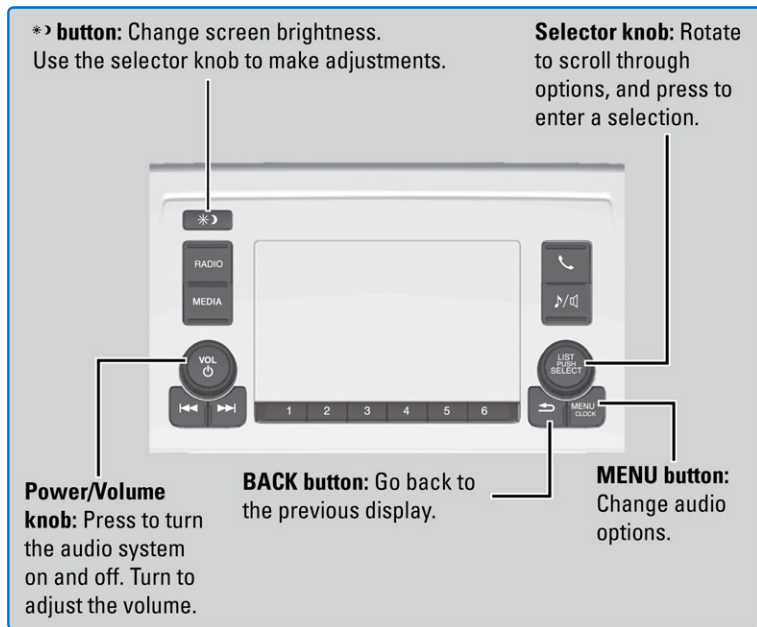
AUDIO AND CONNECTIVITY

1. Press the Sound button.
2. Select a sound mode to change, and adjust it using the selector knob.
3. Press the Back button to exit the menu.



Color Audio System

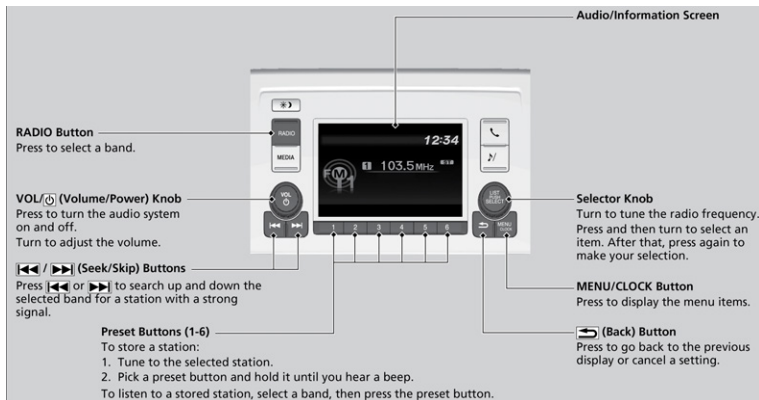
Use the buttons to control the display audio system.



FM/AM Radio

Play FM or AM radio stations.

Models with Color Audio

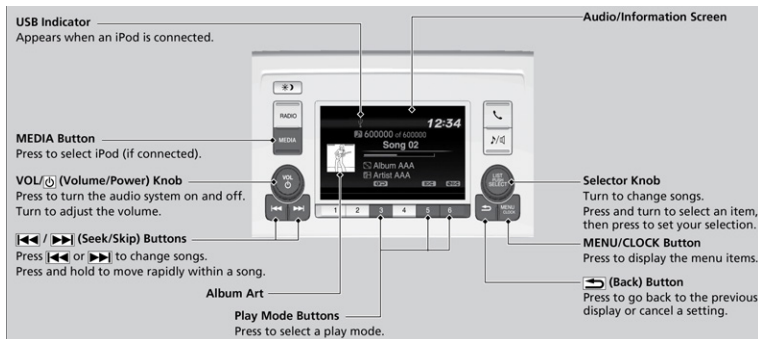


AUDIO AND CONNECTIVITY

iPod®

Play and operate an iPod®*14 through the vehicle's audio system. Connect your device to the USB port (see USB Port).

Models with Color Audio

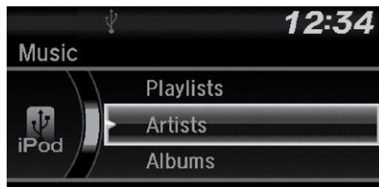


■ Searching for Music

Models with Color Audio

Use the selector knob to search for tracks stored on the iPod.

1. Press the selector knob to display the iPod music list.
2. Rotate the selector knob to select a category.
3. Press the selector knob to display a list of items in the category.

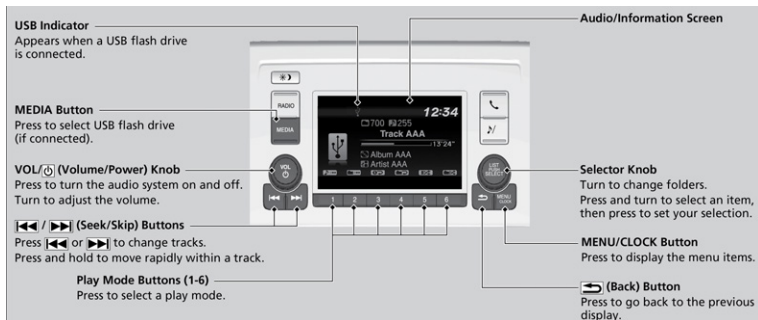


4. Rotate the selector knob to select an item, then press the selector knob. Press the selector knob and rotate it repeatedly until a desired item you want to listen to is displayed.

USB Flash Drive

Play and operate a USB flash drive through the vehicle's audio system. Connect your device (see USB Port).

Models with Color Audio



■ Searching for Music

Models with Color Audio

Use the selector knob to search for tracks stored on the flash drive.

1. From the audio screen, press the selector knob.
2. Select a folder.
3. Select the track you want to play.

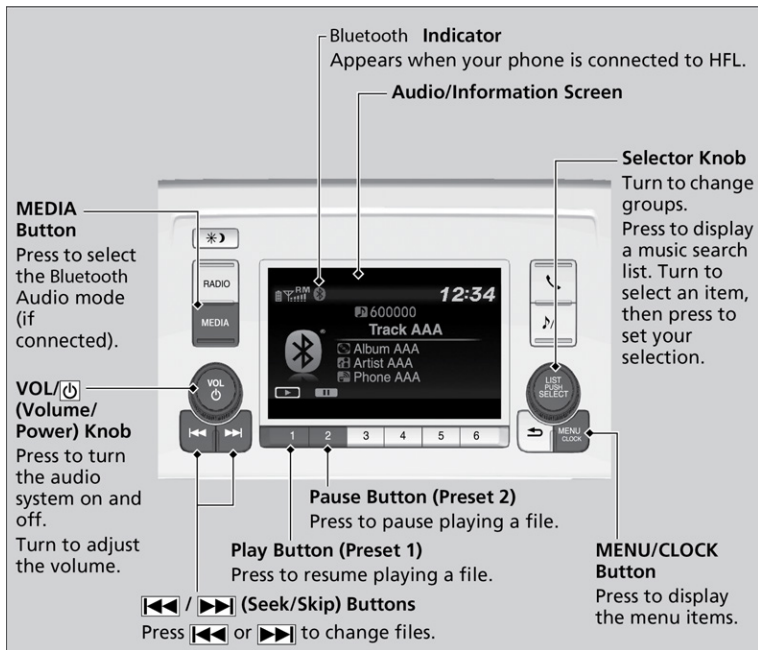


Bluetooth® Audio

Play streaming or stored audio from your compatible phone when it is paired to *Bluetooth*® HandsFreeLink® (see Pairing a Phone). Visit handsfreelink.com (US) or handsfreelink.ca (Canada) to check phone compatibility. Standard data rates apply with your phone service provider.

Models with Color Audio

AUDIO AND CONNECTIVITY

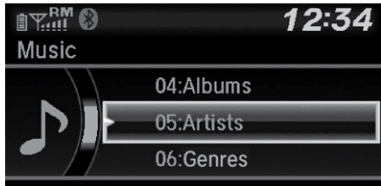


■ Searching for Music

Models with Color Audio

Use the selector knob to search for tracks stored on the device.

1. From the audio screen, press the Selector Knob.
2. Select a category to display a list of items.
3. Select the track you want to play.



Compact Disc (CD)*1 Player

The audio system supports audio CDs, CD-Rs, and CD RWs in MP3, WMA, or AAC formats. Insert a CD to begin automatic playback.

Applicable laws may prohibit the operation of handheld electronic devices while operating a vehicle. Launch streaming audio on your phone only when safe to do so.

**1 - If equipped*