

# AUDIO AND CONNECTIVITY

Learn how to operate the vehicle's audio system.

## Basic Audio Operation

Connect audio devices and operate buttons and displays for the audio system.

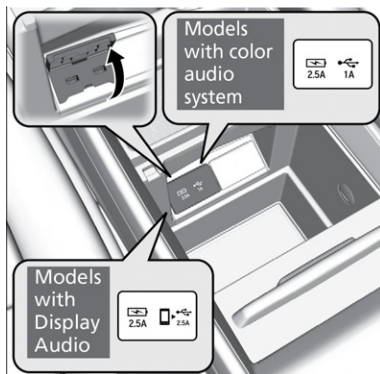
### ■ USB Port

Connect a USB flash drive or other audio device, such as an iPod® or iPhone®\*14. Install the flash drive or cable connector to the USB port.

#### Models with Color Audio

The right-side port (1.0A) is for playing audio, connecting a phone, and device charging.

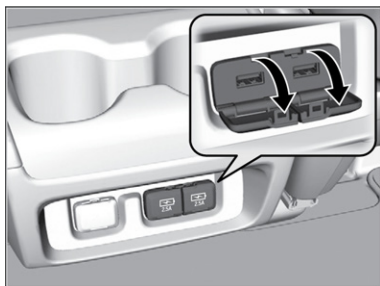
The left-side port (2.5A) is for device charging only.



#### Models with Display Audio

The USB port (2.5A) on the right side is for charging devices, playing audio files and connecting compatible phones with Apple CarPlay or Android Auto.

The USB port (2.5A) on the left side is only for charging devices.



\*14 - iPod and iPhone are trademarks of Apple, Inc.

## ■ Accessory Power Socket

Open the socket cover to use power when the vehicle is on.

Power sockets are located in the front console and the driver's side rear cargo area and the third-row seat\*<sup>1</sup>.

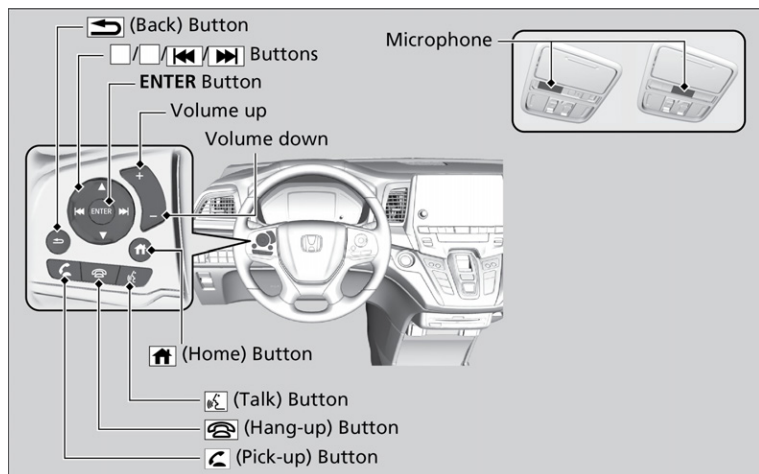
### NOTICE

Do not insert an automotive type cigarette lighter element. This can overheat the power socket.



## ■ Audio Remote Controls\*<sup>1</sup>

You can operate certain functions of the audio system using the steering wheel controls.



## ■ Adjusting the Sound

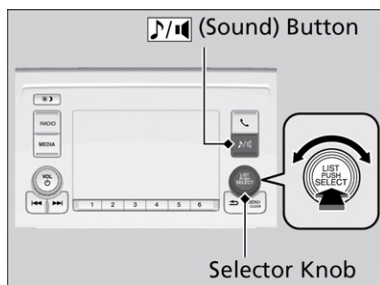
Adjust various sound settings.

### Models with Color Audio

Use the selector knob to make and enter selections.

\*<sup>1</sup> - If equipped

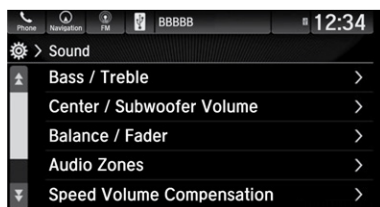
1. Press the Sound button.
2. Select a sound mode to change, and adjust it using the selector knob.
3. Press the Back button to exit the menu.



### Models with Display Audio

Touch items on the screen to make and enter selections.

1. From the HOME screen, select an audio source.
2. Select Sound.
3. Select an item to change and adjust the setting.



## Color Audio System

Use the buttons to control the display audio system.

**\* button:** Change screen brightness.  
Use the selector knob to make adjustments.

**Selector knob:** Rotate to scroll through options, and press to enter a selection.

A diagram of a car stereo control panel with several buttons and a knob. Labels with lines pointing to specific controls include: "Power/Volume knob" pointing to a knob with a power icon; "BACK button" pointing to a button with a left arrow; "MENU button" pointing to a button with a right arrow; and "Selector knob" pointing to a circular knob with a "LIST PUSH SELECT" label.

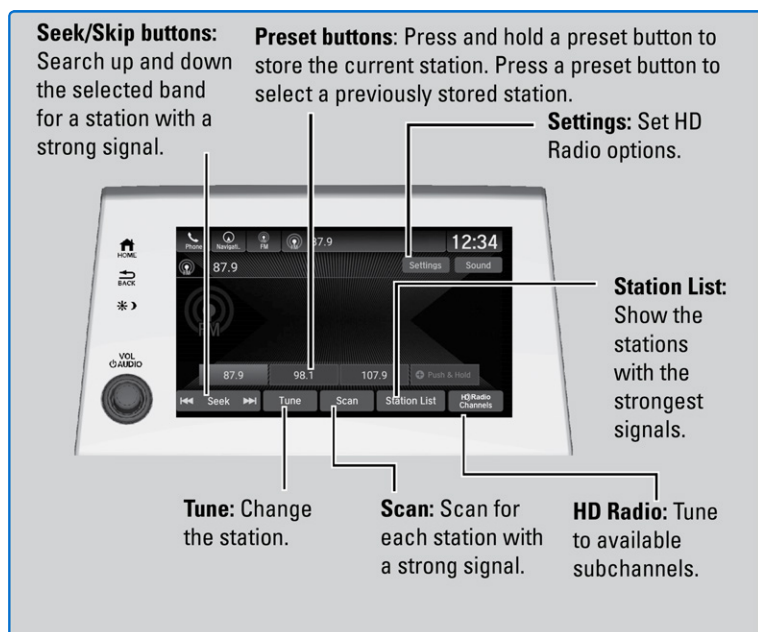
**Power/Volume knob:** Press to turn the audio system on and off. Turn to adjust the volume.

**BACK button:** Go back to the previous display.

**MENU button:** Change audio options.

## Display Audio System

Use simple gestures—including touching, swiping and scrolling—to operate certain audio functions.



Some items may be grayed out during driving to reduce the potential for distraction. You can select them when the vehicle is stopped or use voice commands.

Wearing gloves may limit or prevent touchscreen response.

## HondaLink®

### Models with Display Audio

A subscription-based service that provides convenient features such as voice communication in case of emergency, online security, and one-on-one operator assistance<sup>\*1</sup>.

To check phone compatibility and get more information, visit [handsfreelink.com](http://handsfreelink.com) (US) or [handsfreelink.ca](http://handsfreelink.ca) (Canada). Standard data rates may apply with your phone service provider.

### ■ HondaLink Menu

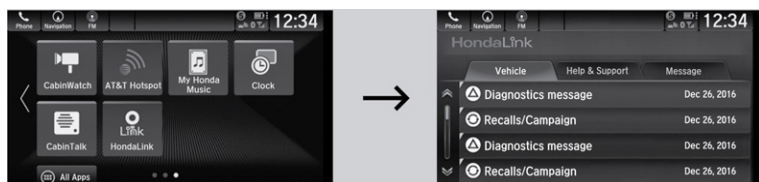
Select a menu option.

<sup>\*1</sup> - If equipped

**Vehicle:** Get instructional messages when your vehicle needs service.

**Messages from Honda:** Displays helpful and important information from Honda.

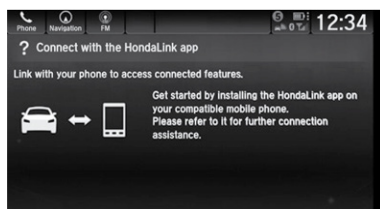
**Help & Support:** Displays tips for vehicle usage, get roadside assistance, or contact customer service.



### ■ HondaLink Connection

Follow the steps below to connect to HondaLink and use its features.

1. Download the HondaLink Connect app to your compatible smartphone.
2. Pair your phone to *Bluetooth HandsFreeLink* (see Pairing a Phone).
3. From the HOME screen, select HondaLink.
4. Certain features require you to send vehicle information to Honda. Select Enable Once, Always Enable, or Disable.



### HondaLink® Assist\*1

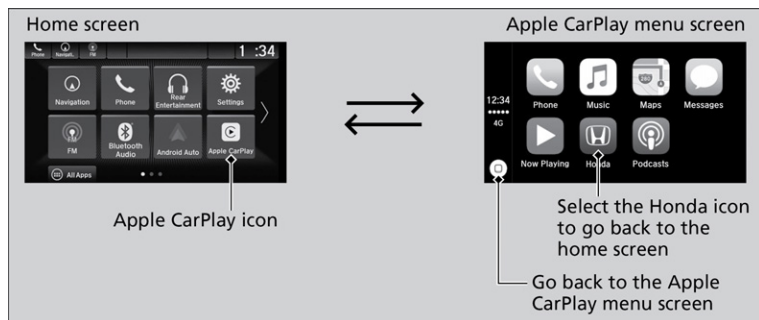
If your vehicle's airbags deploy or if the unit detects that the vehicle is severely impacted, your vehicle automatically attempts to connect to an operator. Your phone must be paired to the system and have good cellular connection. Visit [www.hondalink.com](http://www.hondalink.com) (U.S.) or [honda.ca/hondalinkassist](http://honda.ca/hondalinkassist) (Canada) for more information.

### Apple CarPlay™

#### Models with Display Audio

Connect an Apple CarPlay-compatible iPhone to the system. You can use the touchscreen to make a phone call, listen to music, and more. Visit the Apple CarPlay website for more information. Park in a safe place before connecting your iPhone and launching any compatible apps.

\*1 - If equipped



1. Connect the phone to the front (right side<sup>\*1</sup>) USB port. Compatible Android phones will prompt you to download any required apps.
2. Select Enable or Disable.
3. Follow any prompts shown on your phone.
4. The phone will be automatically paired. A tutorial will appear on the vehicle screen.
5. Select a menu option.
  - **Maps:** View a map and operate navigation. You can only use Apple Maps or the pre-installed navigation system to set a destination with routing guidance.
  - **Messages:** View and reply to text messages, or have messages read to you aloud by the system.

Once connected, press and hold the Talk button on the steering wheel (see Steering Wheel Controls) to operate the system using voice commands with Siri.

<sup>\*1</sup> - If equipped

Depending on use, Apple CarPlay can share certain vehicle information (e.g., vehicle location, speed, and other operating conditions) with the connected iPhone. See Apple's privacy policy for details regarding Apple's use and handling of data uploaded by CarPlay. Use of CarPlay is at user's own risk, and is subject to agreement to the CarPlay terms of use, which are included as part of the Apple iOS terms of use. CarPlay vehicle integration is provided "as is," and Honda cannot guarantee CarPlay operability or functionality now or in the future due to, among other conditions, changes in CarPlay software/Apple iOS, service interruptions, or incompatibility or obsolescence of vehicle-integrated hardware or software. See dealer for details. Only use CarPlay when conditions allow you to do so safely. See your Owner's Manual at [owners.honda.com](http://owners.honda.com) (U.S.) or [myhonda.ca](http://myhonda.ca) (Canada) for further license and warranty terms.

## Android Auto™

### Models with Display Audio

Connect a compatible Android phone to the system. You can use the touchscreen to make a phone call, listen to music, and more. Visit the Android Auto website for more information.

Park in a safe place before connecting your Android smartphone and launching any compatible apps.

1. Connect the phone to the front (right side\*<sup>1</sup>) USB port. Compatible Android phones will prompt you to download any required apps.
2. Select Enable or Disable.
3. Follow any prompts shown on your phone.
4. The phone will be automatically paired. A tutorial will appear on the vehicle screen.
5. Select a menu option.



1. **Maps (Navigation):** View Google Maps and operate navigation. You can only use this system or the pre-installed navigation system to set a destination with routing guidance. You cannot enter destinations using the keyboard while the vehicle is moving.
2. **Phone:** Make phone calls or listen to voicemail.
3. **Home (Google Now):** Display useful information organized by Android Auto into simple cards that appear only when needed.
4. **Music:** Play music from compatible apps. Select this icon to switch between music apps.
5. **Return to HOME screen:** Displays a menu with an option to return to the vehicle system HOME screen.
6. **Voice:** Use voice commands via Google Voice Search to operate Android Auto. You can also press and hold the Talk button on the steering wheel (see Steering Wheel Controls) to say voice commands.

## Wi-Fi Connection

### Models with Display Audio

You can connect the audio system to the internet using Wi-Fi. If your compatible phone has hotspot capabilities, the system can be tethered to the phone. Follow the steps below to set up Wi-Fi when the vehicle is stopped. Standard data rates apply with your phone service provider.

1. From Home, select Settings.
2. Select Connections, then Wi-Fi.
3. Select Change Mode.
4. Select Network, then Save.
5. Select Connect.

Enter a password for the access point, and select OK.



## System Updates

### Models with Display Audio

Install authorized updates to the Display Audio system software. Install via a WiFi connection, WiFi connection or a USB storage device.

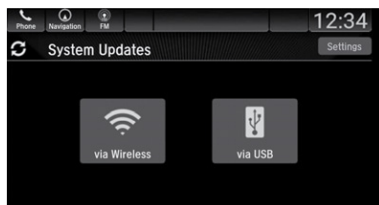
#### ■ Wireless Connection Setup

These steps are required only for updating via Wi-Fi.

*Depending on use, Android Auto can share certain vehicle information (e.g., vehicle location, speed, and other operating conditions) with Google and its service providers. See Google privacy policy for details regarding Google's use and handling of data uploaded by Android Auto. Use of Android Auto is at user's own risk, and is subject to agreement to the Android Auto terms of use, which are presented to the user when the Android Auto application is downloaded to the user's Android phone. Android Auto vehicle integration is provided "as is," and Honda cannot guarantee Android Auto operability or functionality now or in the future due to, among other conditions, changes in Android Auto software/Android operating system, service interruptions, or incompatibility or obsolescence of vehicle-integrated hardware or software. See dealer for details. Only use Android Auto when conditions allow you to do so safely. See your Owner's Manual at [owners.honda.com](http://owners.honda.com) (U.S.) or [myhonda.ca](http://myhonda.ca) (Canada) for further license and warranty terms.*

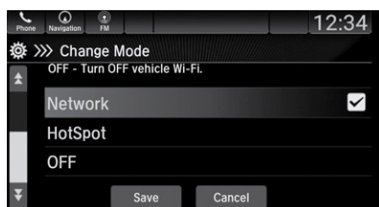
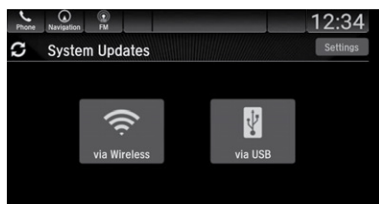


1. From the Home screen, select System Updates, then Settings.
2. Select Connection Setup.
3. Select Change Mode.
4. Select Network, then Save.  
The display returns to the network list.
5. Select an access point from the network list, then Connect.



### ■ Wireless Updating

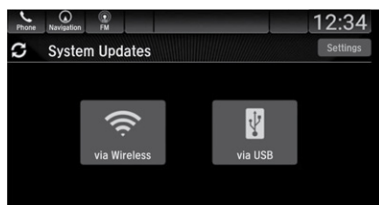
1. From the Home screen, select System Updates.
2. Select Settings.
3. Select Connection Setup.
4. Select Change Mode.
5. Select Network, then Save.
6. Select an access point from the network list, then Connect.



### ■ USB Updating

Download the update

1. From the Home screen, select System Updates, then via USB.
2. Connect a flash drive to the front (right side\*1) USB port (see USB Port).
3. Once the system finishes copying to the flash drive, disconnect the drive and connect it to your computer.



\*1 - If equipped

- Follow the link to download the updated files. See [usb.honda.com](http://usb.honda.com) for more details.

### Install the update

- From the Home screen, select System Updates, then via USB.
- Connect the USB device containing the updated files to the front (right side\*1) USB port.
- Select Install Now or Install While Vehicle Off.

### Note:

- Honda recommends using a flash drive with 8GB capacity or higher.

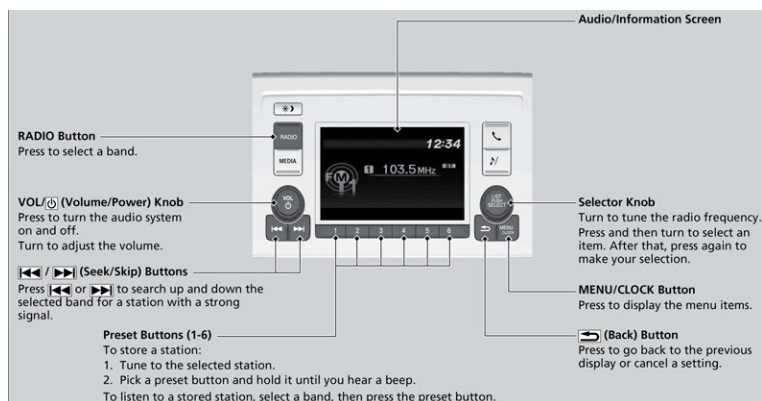
Notes for wireless and USB updating:

- If you select Install Now, the system will reboot. Do not operate the Display Audio unit during the software update. You will see a notice when the update is complete.
- If you select Install While Vehicle Off, you will see a notice when the update is complete when you start the vehicle.

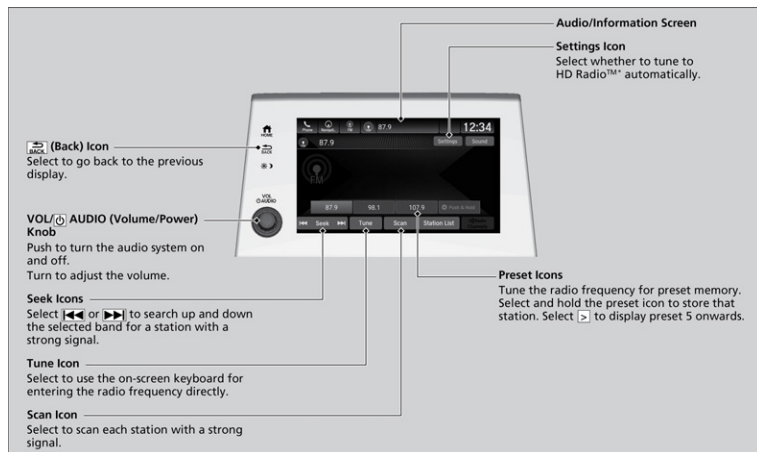
## FM/AM Radio

Play FM or AM radio stations.

### Models with Color Audio



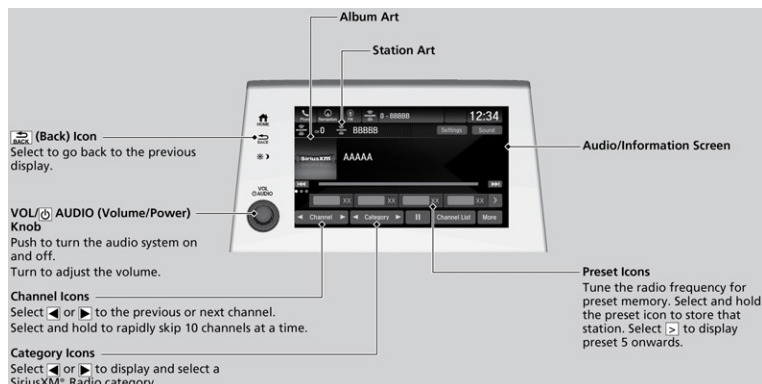
### Models with Display Audio



## SiriusXM® \*1

### Models with Display Audio

Available on a subscription basis only. For more information or to subscribe, contact your dealer, or visit [www.sirius.com/subscribe-now](http://www.sirius.com/subscribe-now) (U.S.) or [www.sirius.ca/subscribe-now](http://www.sirius.ca/subscribe-now) (Canada).



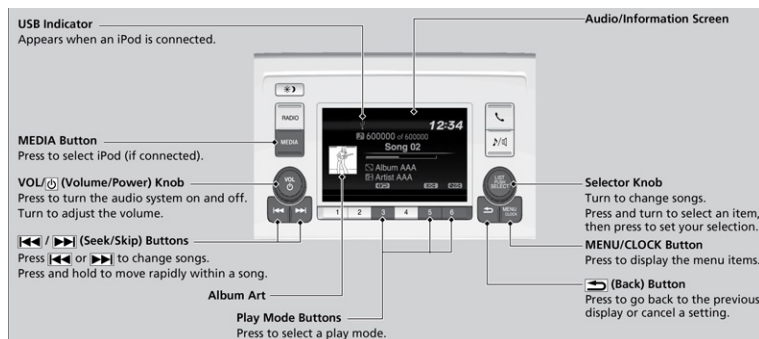
To learn about additional features—such as multi-channel preset, replay, or SportsFlash—see your Owner's Manual at [owners.honda.com](http://owners.honda.com) (U.S.) or [myhonda.ca](http://myhonda.ca) (Canada).

## iPod®

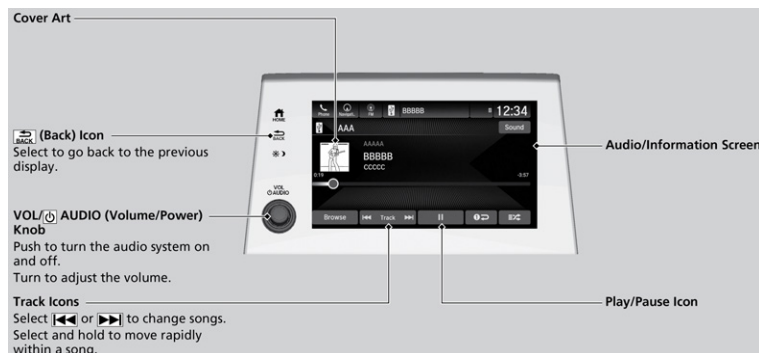
Play and operate an iPod®\*14 through the vehicle's audio system. Connect your device to the USB port (see USB Port).

\*1 - If equipped

## Models with Color Audio



## Models with Display Audio

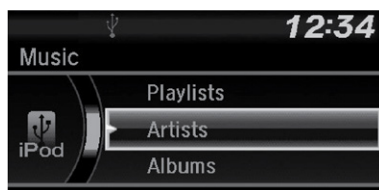


## ■ Searching for Music

### Models with Color Audio

Use the selector knob to search for tracks stored on the iPod.

1. Press the selector knob to display the iPod music list.
2. Rotate the selector knob to select a category.
3. Press the selector knob to display a list of items in the category.

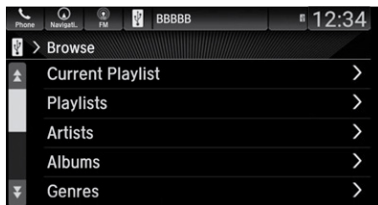


- Rotate the selector knob to select an item, then press the selector knob. Press the selector knob and rotate it repeatedly until a desired item you want to listen to is displayed.

## Models with Display Audio

Use the touchscreen to search for tracks stored on the iPod.

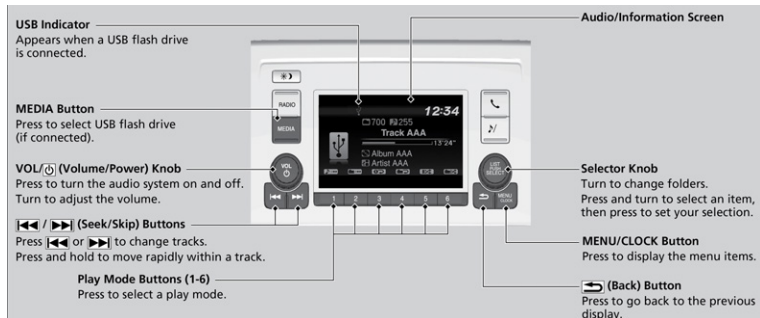
- Select Browse.
- Select the items on that menu.



## USB Flash Drive

Play and operate a USB flash drive through the vehicle's audio system. Connect your device (see USB Port).

## Models with Color Audio



## Models with Display Audio



## ■ Searching for Music

### Models with Color Audio

Use the selector knob to search for tracks stored on the flash drive.

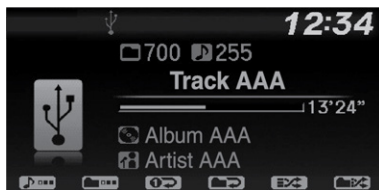
1. From the audio screen, press the selector knob.
2. Select a folder.
3. Select the track you want to play.



### Models with Display Audio

Use the touchscreen to search for tracks.

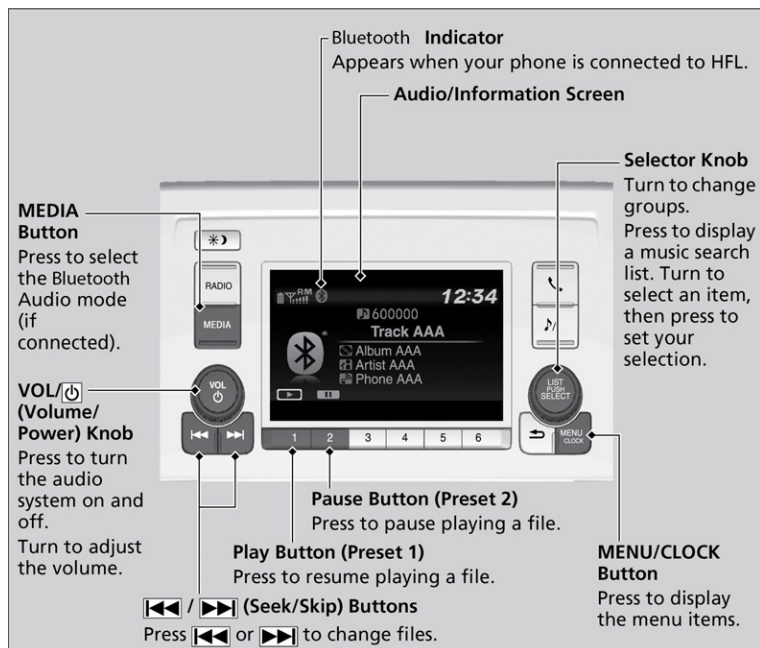
1. Press the selector knob to display a folder list.
2. Rotate the selector knob to select a folder.
3. Press the selector knob to display a list of tracks in that folder.
4. Rotate the selector knob to select a track, then press the selector knob.



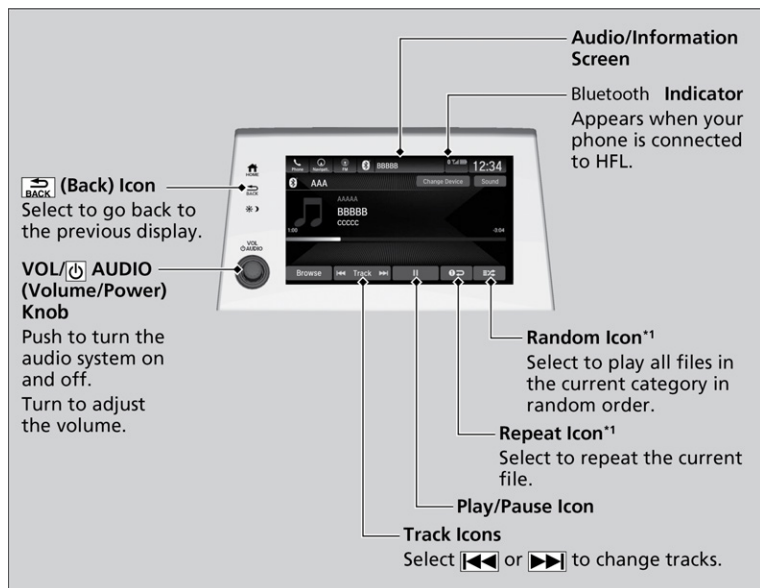
## Bluetooth® Audio

Play streaming or stored audio from your compatible phone when it is paired to *Bluetooth®* HandsFreeLink® (see Pairing a Phone). Visit [handsfreelink.com](http://handsfreelink.com) (US) or [handsfreelink.ca](http://handsfreelink.ca) (Canada) to check phone compatibility. Standard data rates apply with your phone service provider.

### Models with Color Audio



## Models with Display Audio

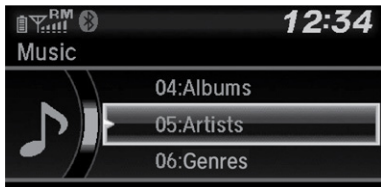


## ■ Searching for Music

### Models with Color Audio

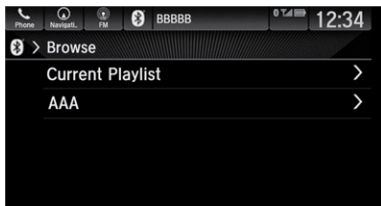
Use the selector knob to search for tracks stored on the device.

1. From the audio screen, press the Selector Knob.
2. Select a category to display a list of items.
3. Select the track you want to play.



### Models with Display Audio

1. Select Browse.
2. Select a search category (e.g., Albums).
3. Select an item.



#### Note:

- Make sure the volume on your phone is properly adjusted.
- You may need to enable additional settings on your phone for playback.
- The resume/pause function and remote audio controls are not supported on all phones.

## Compact Disc (CD)\*1 Player

The audio system supports audio CDs, CD-Rs, and CD RWs in MP3, WMA, or AAC formats. Insert a CD to begin automatic playback.

*Applicable laws may prohibit the operation of handheld electronic devices while operating a vehicle. Launch streaming audio on your phone only when safe to do so.*

*\*1 - If equipped*



# AUDIO AND CONNECTIVITY

## Models with Display Audio

