


# VEHICLE CONTROLS

Learn about the various controls necessary for operating and driving the vehicle.

## Using the Remote Transmitter

Lock or unlock the doors, tailgate, and fuel-fill door. Start and stop the engine.\*<sup>1</sup>



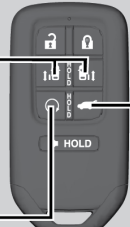
**Unlock button:** Press once to unlock the driver's door. Press again to unlock all doors.

**Lock button:** Press to lock the doors and tailgate. Press again for audible verification.

**Tailgate button:** Press once to unlock the tailgate.

**Panic button:** Press and hold to sound the alarm for 30 seconds. Press any button to cancel.

**Built-in key:** Slide the release knob on the back of the transmitter and pull out the built-in key.



**Power sliding door buttons\*:** Press and hold to open the sliding door. Press again to stop the door during operation. Press again to close the door.

**Power tailgate button\*:** Press and hold to unlock and open the power tailgate. Press again to close it.

**Engine button\*:** After pressing the Lock button, press and hold to remotely start the engine.

Release knob

Built-in key

## NOTICE

Leaving the remote transmitter in the vehicle can result in theft or accidental movement of the vehicle. Always take it with you whenever you leave the vehicle unattended.

\*1 - If equipped

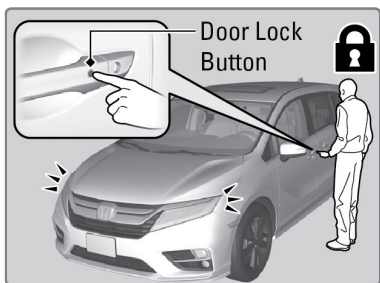
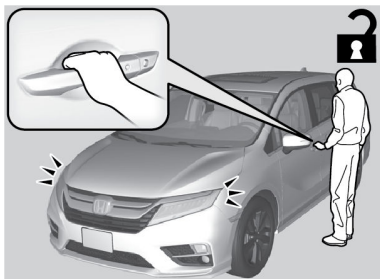
## Smart Entry System\*1

When you carry the remote transmitter (for example, in a pocket or purse) and it is outside the vehicle and within range (about 32 inches or 80 cm), you can lock or unlock the doors, and the tailgate without handling the transmitter.

### ■ Unlocking/Locking the Doors

**To unlock:** Grab the driver's door handle to unlock the driver's door. Grab the front passenger's door handle or rear door handle to unlock all the doors and the tailgate. You can customize this feature's behavior.

**To lock:** Press the door lock button on either front door handle. If the remote transmitter is inside the vehicle, the doors will not lock.



### ■ Walk Away Auto Lock®

When you walk away from the vehicle while carrying the remote transmitter, the doors can automatically lock if the following conditions are met:

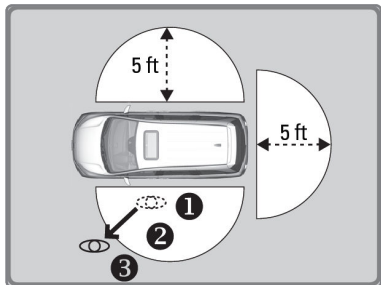
- The remote transmitter is within a range of 5 feet (1.5 m).
- All doors and the trunk are closed.
- There is not an additional remote transmitter inside the vehicle.

Follow these steps:

\*1 - If equipped

## VEHICLE CONTROLS

1. Exit the vehicle, close the door and stay near it. Listen for a beep. The system is activated.
2. Walk at least 5 feet (1.5 m) away.
3. Listen for a beep and look for the lights to flash. The doors lock.



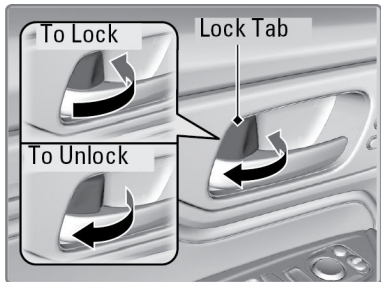
## Door Operation

Use several methods to lock or unlock the doors.

### ■ Using the Lock Tab

**To unlock:** When you unlock either front door using the lock tab, the specific door (driver's or passenger's) unlocks.

**To lock:** When you lock the door using the lock tab on the driver's door, all the other doors and the tailgate lock at the same time. When you lock the door using the lock tab on the front passenger's door, only that door locks.



### ■ Using the Front Door Inner Handle

Pull the front door inner handle. The door unlocks and opens in one motion. Unlocking and opening the driver's door from the inner handle unlocks all other doors.

Do not pull a front door inner handle while the vehicle is moving.

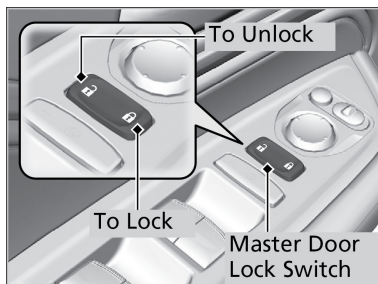
Unlocking and opening the driver's door from the inner handle unlocks all the other doors and the trunk.



### ■ Using the Master Door Lock Switch

**To unlock:** Press the unlock side of the switch to unlock all doors and the tailgate.

**To lock:** Press the lock side of the switch to lock all doors and the tailgate.

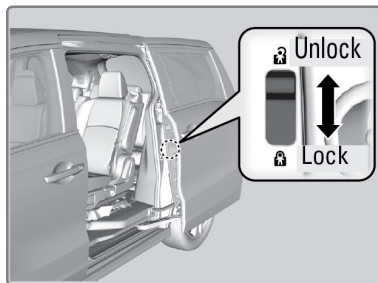


### ■ Childproof Door Locks

The childproof door locks prevent the rear doors from being opened from the inside regardless of the position of the lock tab.

Slide the lever in the rear door to the lock position, and close the door.

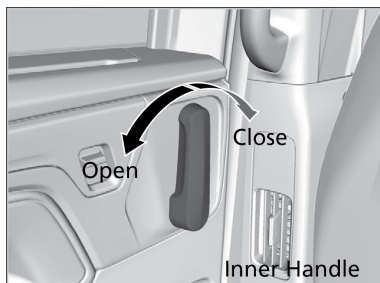
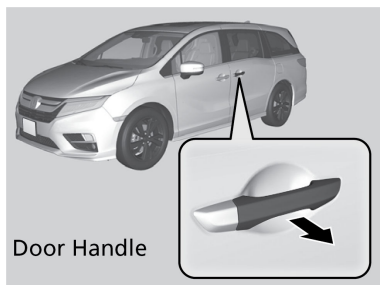
Open the door using the outer door handle.



### ■ Opening/Closing the Sliding Doors

From the outside, pull the outer door handle and slide the door all the way to the front or rear.

From the inside, grab the inner door handle and slide the door all the way to the front or rear.



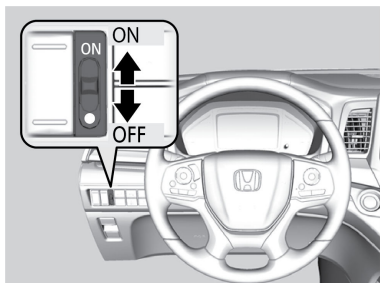
### ■ Power Sliding Doors\*<sup>1</sup>

When the vehicle is OFF or the remote engine start mode is active, the power sliding doors operate when:

- The power sliding door switch is ON (as shown) and
- The power sliding door is unlocked and
- The fuel fill door is closed (for driver's side sliding door).

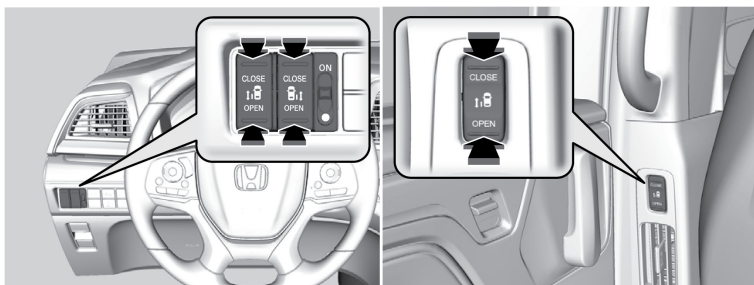
When the vehicle is ON, the power sliding doors operate when:

- The shift position is P and
- The brake pedal is depressed or the electric parking brake is applied and
- You use the power sliding door switches on the dashboard.



*\*1 - If equipped*

## From the inside



Press OPEN on the power sliding door button for the desired door side.

Press CLOSE to close the door.

While a power sliding door is in operation, you can press the button again to stop it from opening or closing. Press the button again to resume operation.

A sliding door will not open fully if the window is open more than 3 inches (8 cm). Close the door, close the window, and open the door again.

The driver's side sliding door will not open if the fuel fill door is opened.

**Note:** Closing a sliding door while any part of a passenger is in the door's path can cause serious injury.

Make sure all passengers are clear of the doorway before closing a sliding door.

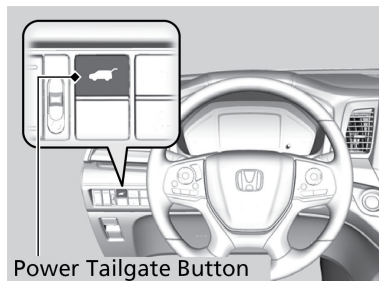
## Tailgate Operation

Use these methods to operate the tailgate.

### ■ Power Tailgate Button

To open or close the power tailgate, press the power tailgate button for about one second.

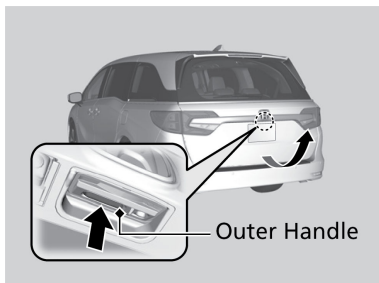
If you press the button again while the power tailgate is moving, it will stop. Press the button for about one second, and the power tailgate will reverse direction.



### ■ Power Tailgate Outer Handle

#### Automatic Operation

If you press the outer handle of the tailgate for no longer than one second, the tailgate opens automatically.



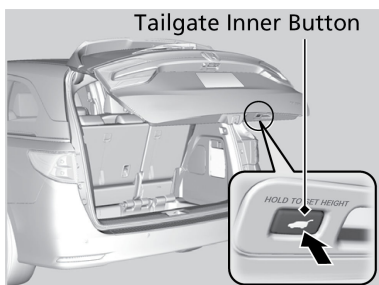
#### Manual Operation

If you want to open the tailgate manually, press the button for more than one second.

### ■ Programmable Tailgate Position

You can set the maximum opening of the tailgate to suit your needs.

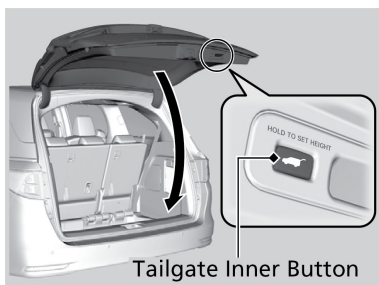
1. Manually adjust the tailgate to your desired position.
2. Press and hold the tailgate inner button until you hear one long and two short beeps.



### ■ Power Tailgate Inner Button

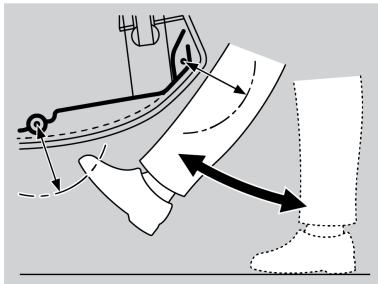
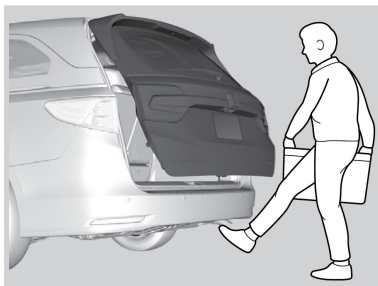
Press the button on the tailgate to close the power tailgate.

If you press the button again while the power tailgate is moving, it will stop. Press and release the button again, and the power tailgate will reverse direction.



### ■ Power Tailgate Hands Free Access\*1

Use a forward and back kicking motion under the center of the rear bumper to open or close the power tailgate while carrying the keyless access remote.



*\*1 - If equipped*