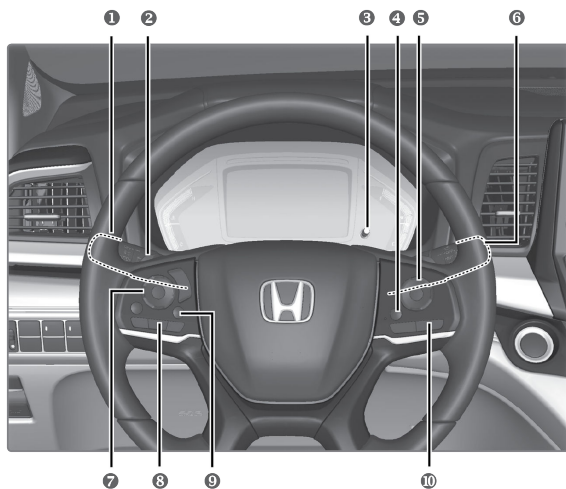


VISUAL INDEX

Quickly locate items in the vehicle's interior.

Steering Wheel and Nearby Controls

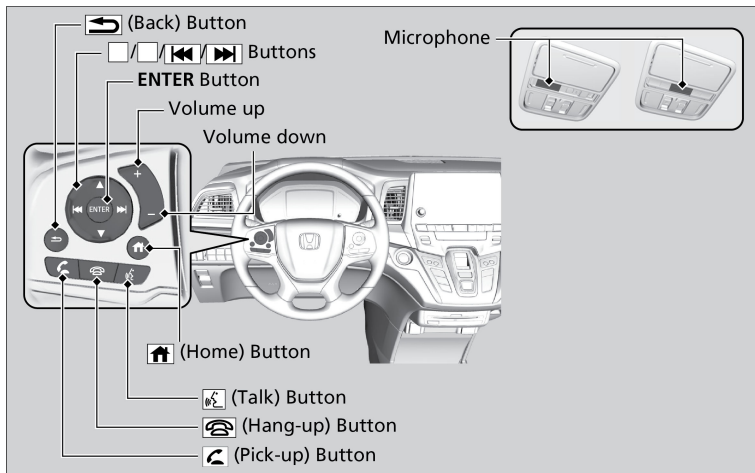


- | | |
|--|---|
| <ul style="list-style-type: none"> ❶ Headlights/Turn Signals
Fog Lights*¹
LaneWatch™*¹ ❷ Paddle Shifters ❸ Brightness Control ❹ Heated Steering Wheel Button*¹ ❺ Cruise Control*¹/Adaptive Cruise Control (ACC)*¹/Interval Button*¹ | <ul style="list-style-type: none"> ❻ Wipers/Washers ❼ Audio Remote Control Buttons ❽ Bluetooth® HandsFreeLink® Buttons ❾ Home Button ❿ Lane Keeping Assist System (LKAS) Button*¹ |
|--|---|

**1 - If equipped*

■ Audio Remote Controls*1

You can operate certain functions of the audio system using the steering wheel controls.



**1 - If equipped*

NAVIGATION

Learn how to enter a destination and operate the navigation system*1.

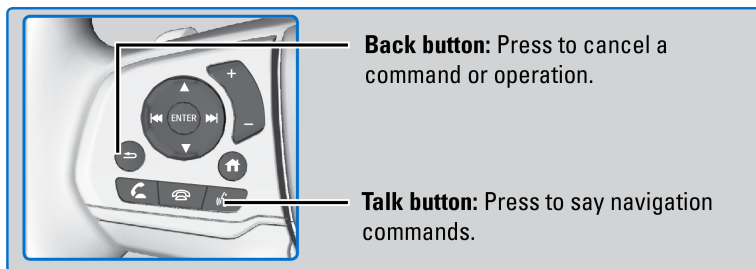
Basic Navigation Operation

A real-time navigation uses GPS and a map database to show your current location and help guide you to a desired destination. You can operate the system using voice commands or the system controls.

To reduce the potential of driver distraction, certain manual functions may be inoperable or grayed out while the vehicle is moving. Voice commands are always available.

■ Steering Wheel Controls

Use the steering wheel controls to give voice commands.



■ Talk Button Tips

The system recognizes only the commands in the Voice Command Index, see Voice Portal Commands.

- When using the Talk button, wait for a beep before saying a command.
- To bypass the system prompts, simply press the Talk button again to say your command.
- Speak in a clear, natural voice.
- Reduce all background noise.
- Adjust the dashboard vents away from the microphone in the ceiling.
- Close the windows and moonroof*1.

*1 - If equipped