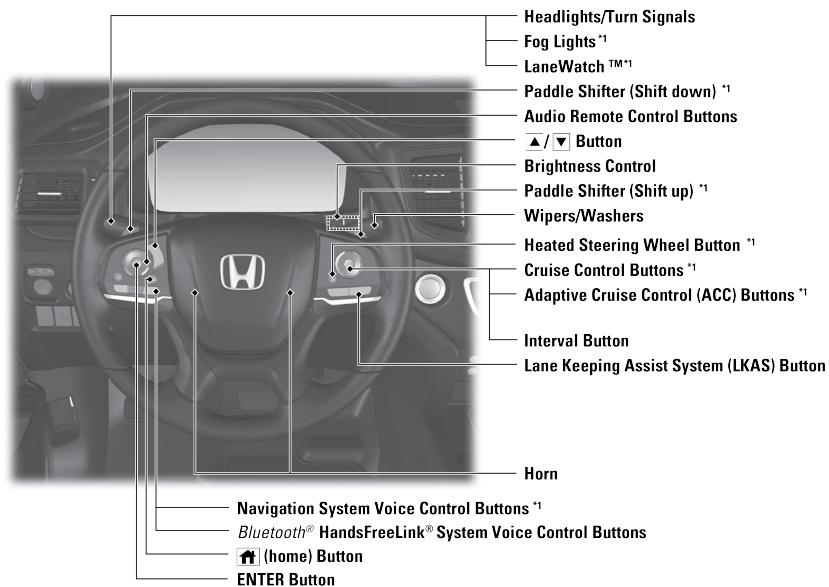


VISUAL INDEX

Quickly locate items in the vehicle's interior.

Steering Wheel and Nearby Controls



**1 - If equipped*

■ Audio Remote Controls

You can operate certain functions of the audio system using the steering wheel controls.

Models with Color Audio

SOURCE Button

Cycles through audio modes.

+ / - (Volume) Bar

Press + : To increase the volume.

Press - : To decrease the volume.

<</>> Buttons

When listening to the radio

Press >>: To select the next preset radio station.

Press <<: To select the previous preset radio station.

Press and hold >>: To select the next strong station.

Press and hold <<: To select the previous strong station.

When listening to an iPod, USB flash drive, or Bluetooth® Audio

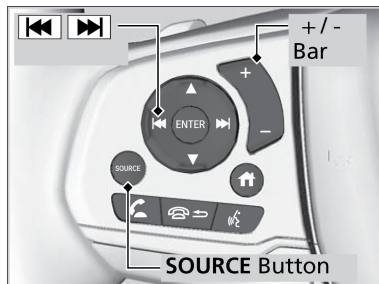
Press >>: To skip to the next song.

Press <<: To go back to the beginning of the current or previous song.

When listening to a USB flash drive, or Bluetooth® Audio

Press and hold >>: To skip to the next folder.

Press and hold <<: To go back to the previous folder.



Models with Display Audio

+ / - (Volume) Bar

Press + : To increase the volume.

Press - : To decrease the volume.

When selecting the audio mode

Press Up arrow or Down arrow to select **Now Playing** on the home screen of the driver information interface, and then press the **ENTER** button.

Press Up arrow or Down Arrow

Cycles through the audio modes.

When listening to the radio

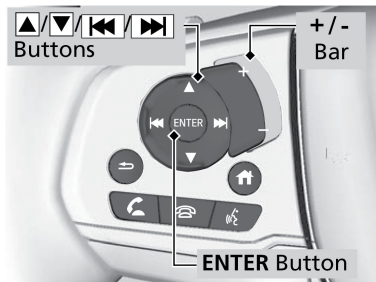
Press >>: To select the next preset radio station.

Press <<: To select the previous preset radio station.

When listening to a CD*¹, iPod, USB flash drive, My Honda Music, or Bluetooth® Audio

Press >> : To skip to the next song.

Press << : To go back to the beginning of the current or previous song.



*1 - If equipped