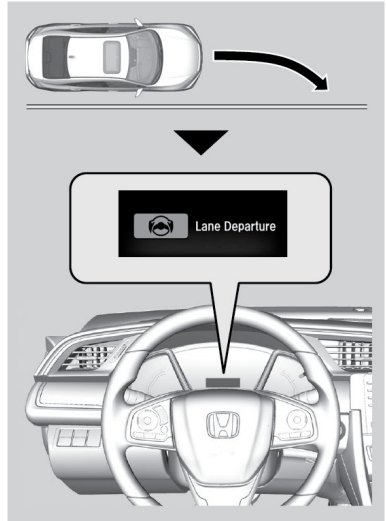


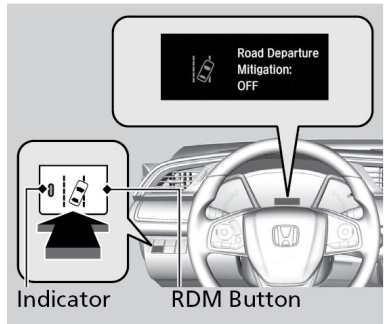
Road Departure Mitigation (RDM)

Alerts and helps to assist you if the system determines a possibility of your vehicle unintentionally crossing over detected lane markings and/or leaving the roadway altogether while driving between 45-90 mph (72-145km/h).



■ Turning the System On or Off

Press the RDM button to turn the system on or off. The indicator in the button comes on and the message appears on the driver information interface when the system is on.



■ Changing Settings

Models with Color Audio

Using the Driver Information Interface

1. Press the Display/Information button, then select Vehicle Settings. Press the ENTER button.
2. Select Driver Assist System Setup, then press the Enter button.
3. Select Road Departure Mitigation Setting.
4. Select an option based on your preferences (Normal/Wide/Warning Only).

Models with Display Audio

1. Press the HOME button, then select Settings.
2. Select Vehicle.
3. Select Driver Assist System Setup.
4. Select Road Departure Mitigation Setting.
5. Select from the options.

■ Important Safety Reminder

The RDM system has limitations. Over-reliance on it may result in a collision. It is always your responsibility to keep your vehicle within the driving lane.

The RDM system only alerts you when lane drift is detected without a turn signal in use. The RDM system may not detect all lane marking or lane or roadway departures; accuracy will vary based on weather, speed, and lane marker condition. It is always your responsibility to safely operate the vehicle and avoid collisions.