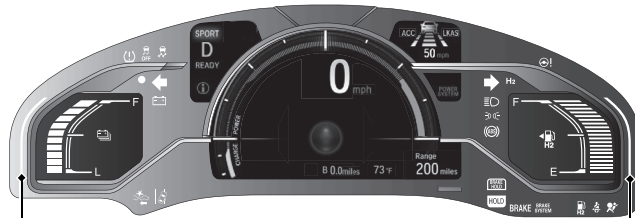
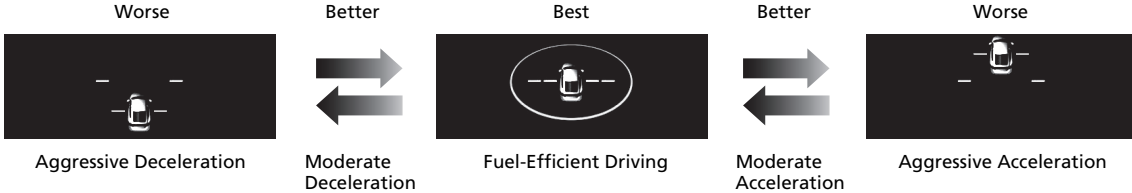


Eco Assist[®] System

Eco Drive Display

- Keep the vehicle icon near the center of the circle.

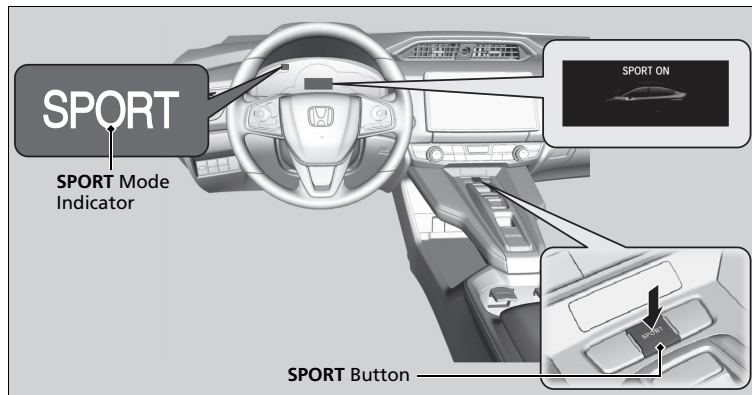
Fuel economy is:



Ambient Meter

With **SPORT** mode off, the color of the ambient meter changes to green to indicate that the vehicle is being driven in a fuel efficient manner.

SPORT Mode



Driving

To turn the SPORT mode on and off, press the **SPORT** button.

The SPORT mode delivers increased handling agility and responsiveness. This mode is suitable for driving on hills or through curves on mountain roads.

The SPORT mode is turned off every time you start the power system, even if you turned it on the last time you drove the vehicle.