

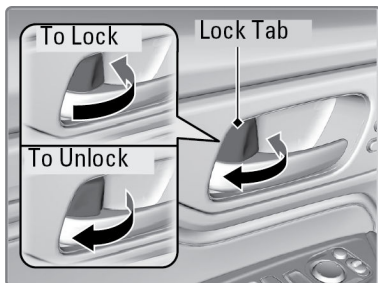
### Door Operation

There are a few different ways of unlocking the doors from inside the vehicle.

#### ■ Using the Lock Tab

**To unlock:** Pull the lock tab rearward. When you unlock either front door using the lock tab, the specific door (driver's or passenger's) unlocks.

**To lock:** Push the lock tab forward. When you lock the door using the lock tab on the driver's door, all the other doors and the tailgate lock at the same time. When you lock the door using the lock tab on the front passenger's door, only that door locks.



#### ■ Using the Front Door Inner Handle

Pull the front door inner handle. The door unlocks and opens in one motion. Unlocking and opening the driver's door from the inner handle unlocks all other doors.

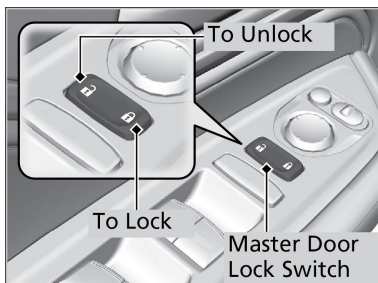
Do not pull a front door inner handle while the vehicle is moving.



#### ■ Using the Master Door Lock Switch

**To unlock:** Press the unlock side of the switch to unlock all doors and the tailgate.

**To lock:** Press the lock side of the switch to lock all doors and the tailgate.



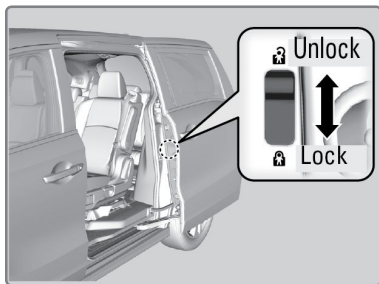
## ■ Childproof Door Locks

The childproof door locks prevent the rear doors from being opened from the inside regardless of the position of the lock tab.

Slide the lever in the rear door to the lock position, and close the door.

Open the door using the outer door handle.

**Note:** To open the door from the inside when the childproof door lock is on, put the lock tab in the unlock position, lower the rear window, put your hand out of the window, and pull the outside door handle.



## ■ Precautions for Opening/Closing the Sliding Doors

Always make sure individuals and objects are clear of the sliding doors.

Open the sliding door all the way until it stops. If it is not fully opened, the sliding door may close again by its own weight.

Do not leave the sliding door open while parking on a slope. The door may slide close by its weight.

When opening or closing the sliding doors, do not grab the door or place your hand on the vehicle body. Use the handle.

Do not put your foot and hand on the sliding door rail and on the rollers.

If a small child is in the vehicle, use the childproof door locks to prevent the child in the rear seat from accidentally opening the sliding doors.

Do not put any items that stick out from the pocket in the door pockets. It may prevent the doors from properly opening or closing, and damage the vehicle.

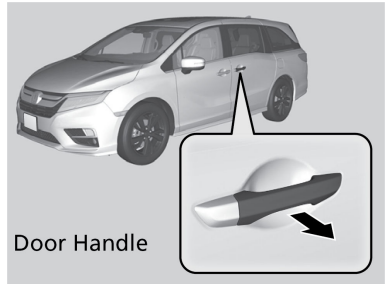
### **⚠ WARNING**

Closing a sliding door while any part of a passenger is in the door's path can cause serious injury.

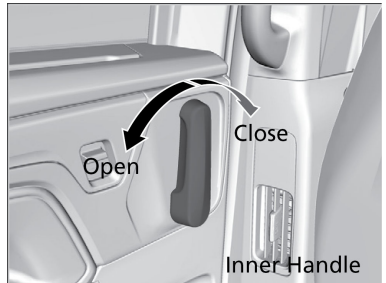
Make sure all passengers are clear of the doorway before closing a sliding door.

## ■ Opening/Closing the Sliding Doors

From the outside, pull the outer door handle and slide the door all the way to the front or rear.



From the inside, grab the inner door handle and slide the door all the way to the front or rear.

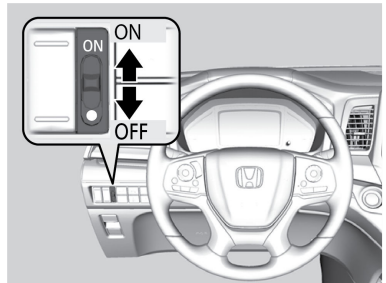


## ■ Power Sliding Doors\*1

The power sliding doors can be operated by pressing the power sliding door button on the remote, pressing the power sliding door switches on the dashboard or door pillars, or using the door handle.

The power sliding doors can be operated when:

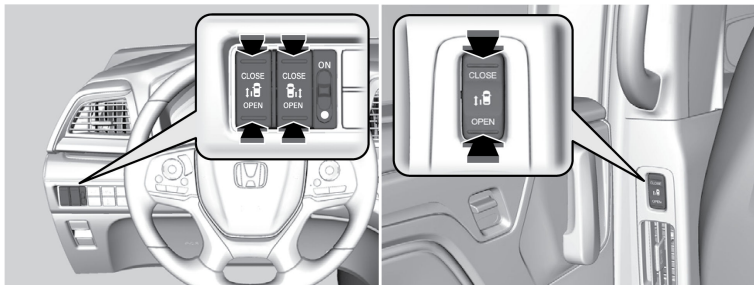
- The power sliding door switch is **ON**.
- The power sliding door is unlocked.
- The fuel fill door is closed (for driver's side sliding door).
- The shift position is either in Park (P) or the brake pedal is depressed or the parking brake is applied.



### Opening/Closing the Power Sliding Doors

Press **OPEN** on the power sliding door button for the desired door side.

\*1 - If equipped



Press **CLOSE** to close the door.

While a power sliding door is in operation, you can press the button again to stop it from opening or closing. Press the button again to resume operation.

A sliding door will not open fully if the window is open more than 5 inches (13 cm). Close the door, close the window, and open the door again.

The driver's side sliding door will not open if the fuel fill door is opened.

**Note:** Closing a power sliding door on someone's hand or fingers can cause serious injury. Some parts of the door edge do not sense resistance when the door is near closing.

### **⚠ WARNING**

Closing a sliding door while any part of a passenger is in the door's path can cause serious injury.

Make sure all passengers are clear of the doorway before closing a sliding door.