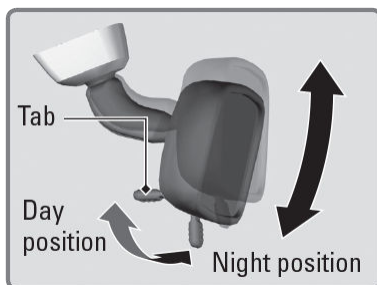


## Adjusting the Mirrors

Adjust the angle of the mirrors for the best visibility when you are sitting in the correct driving position.

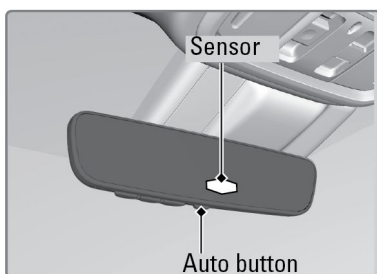
### ■ Rearview Mirror with Day/Night Positions\*<sup>1</sup>

Manually adjust the position to reduce headlight glare from vehicles behind you. Flip the tab to switch between day and night positions.



### ■ Automatic Dimming Rearview Mirror\*<sup>1</sup>

The automatic dimming function reduces glare in the rearview mirror from headlights behind you. Press the AUTO button to turn this function on and off. This function cancels when the transmission is in Reverse (R).



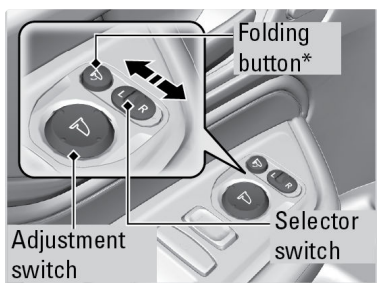
### ■ Power Door Mirrors

You can adjust the door mirrors when the power mode is in ON.

**L/R selector switch:** Select the left or right mirror. After adjusting the mirror, return the switch to the center position.

**Mirror position adjustment switch:** Press the switch left, right, up, or down to move the mirror.

**Folding door mirrors\*<sup>1</sup> button:** Press to fold the door mirrors in and out.



\*<sup>1</sup> - If equipped

### ■ Reverse Tilt Door Mirrors\*1

If activated, either side door mirror automatically tilts downward when you put the transmission into R (Reverse); this improves close-in visibility on the selected side of the vehicle when backing up. The mirror automatically returns to its original position when you take the transmission out of R (Reverse).

To activate this feature, set the power mode to ON and slide the selector switch to the left or right side.



*\*1 - If equipped*