

Driver Information Interface

The driver information interface displays the speedometer, tachometer, odometer, trip computer, outside temperature, and other gauges. It also displays important messages such as warnings and other helpful information.

■ Speedometer

Displays your driving speed in mph or km/h.

■ Tachometer

Shows the number of engine revolutions per minute.

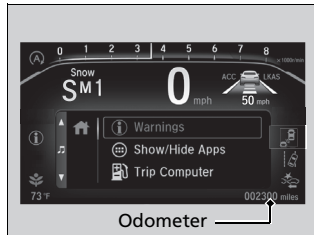
☒ Speedometer

You can set the speedometer and the displayed measurements to read in either mph and km/h.

☒ Tachometer

You can turn on or off the tachometer display.

Odometer



Shows the total number of miles or kilometers that your vehicle has accumulated.

Outside Temperature



Shows the outside temperature in Fahrenheit (U.S.) or Celsius (Canada).

Adjusting the outside temperature display

Adjust the temperature reading by up to $\pm 5^{\circ}\text{F}$ or $\pm 3^{\circ}\text{C}$ if the temperature reading seems incorrect.

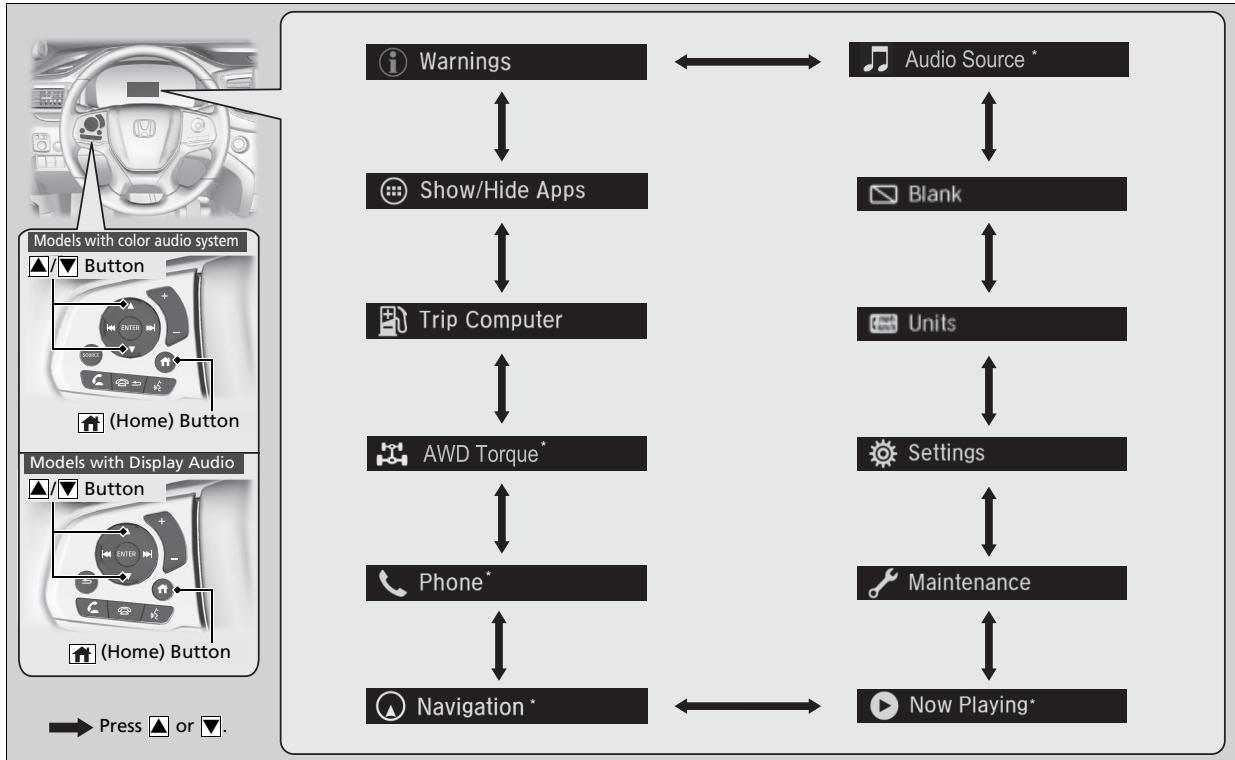
Use the driver information interface* or audio/information screen* to correct the temperature.

Outside Temperature

The temperature sensor is in the front bumper. Road heat and exhaust from another vehicle can affect the temperature reading when your vehicle speed is less than 19 mph (30 km/h).

It may take several minutes for the display to be updated after the temperature reading has stabilized.

* Not available on all models



Instrument Panel



* Not available on all models

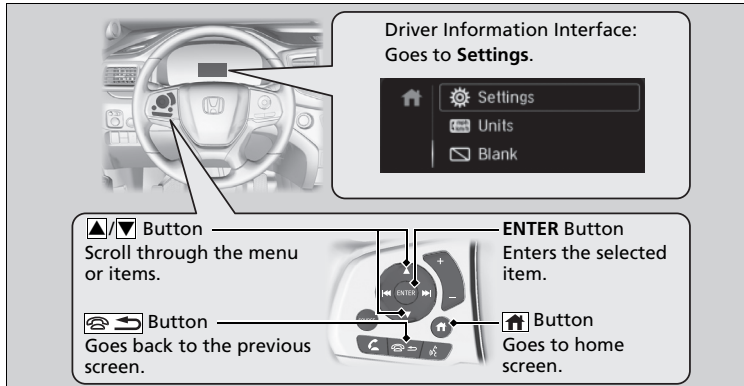
Models with color audio system

■ Vehicle Customization


Use the driver information interface to customize certain vehicle features.


How to customize

First, make sure the vehicle is at a complete stop and that the power mode is set to ON. Next, press the  (home) button, then press the  button to select **Settings**. Finally, press the **ENTER** button.




⊗ Vehicle Customization

To customize other features, press the  button.

Change to  before you attempt to change a customized setting.

■ **Customization flow**

Press the  (home) button.

