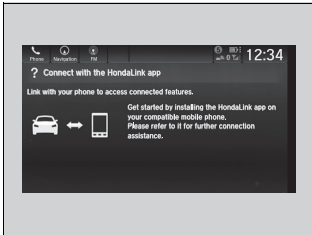
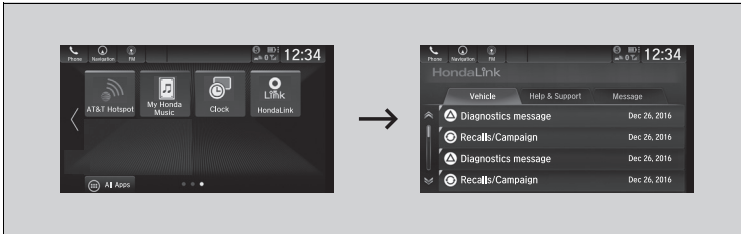


■ To link with HondaLink®



You may see the connection guide screen after launching HondaLink® when there is no connection available.

■ HondaLink® Menu



■ Vehicle

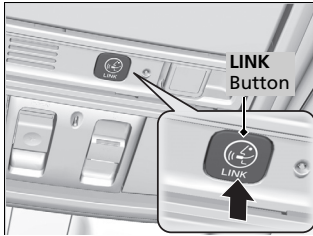
Displays instruction messages when the vehicle needs service.


■ Help & Support

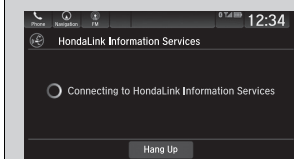
Displays tips for vehicle usage, and get support via road side or customer service center.

■ Operator Assistance*

Connect to the HondaLink® operator when trying to find a destination or for roadside assistance.



1. Press the **LINK** button.
 - ▶ Connection to the operator begins.
2. Talk to the operator.
 - ▶ To disconnect, select **Hang Up** on the audio/information screen or press the  button on the steering wheel.




Audio/information screen when connected to the HondaLink® operator.

☒ Operator Assistance*

Remain attentive to road conditions and driving during operator assistance.

If you want to add or renew a subscription, call the Operator Assistance.

1. Select .
2. Select **Settings**.
3. Select **System**.
4. Select **Subscription**.
5. Select **HondaLink Subscription Status**.

* Not available on all models