

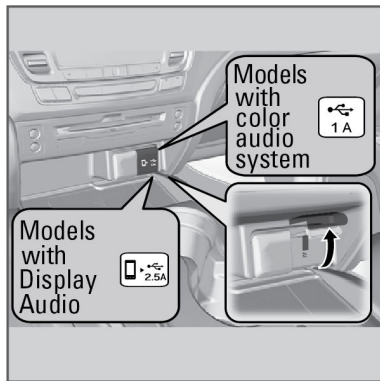
■ USB Port

Install the iPod® USB connector or the USB flash drive to the USB port.

Models with Color Audio

On the console panel

The USB port (1.0A) is for playing audio files on a USB flash drive, connecting a cellular phone and charging devices.

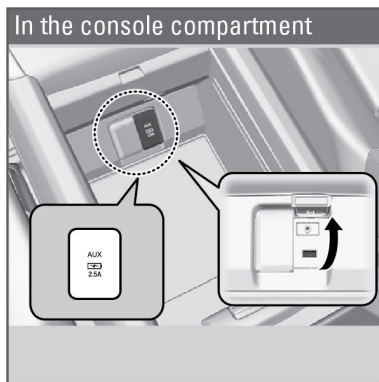


Models with Display Audio

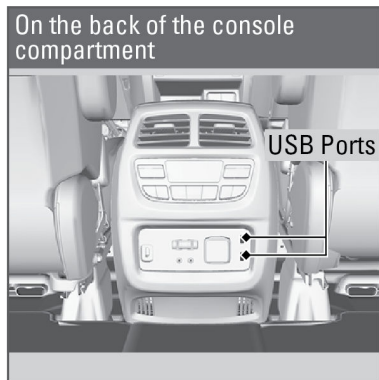
The USB port (2.5A) is for charging devices, playing audio files and connecting compatible phones with Apple CarPlay® or Android Auto™.

In the console compartment

The USB port (2.5A) is only for charging devices.

**On the back of the console compartment*1**

The USB ports (2.5A) are only for charging devices.



Tip: To prevent any potential issues, be sure to use an Apple MFi Certified Lightning Connector for Apple CarPlay® or a USB cable certified by USB-IF to be compliant with USB 2.0 Standard for Android Auto™.

**1 - If equipped*