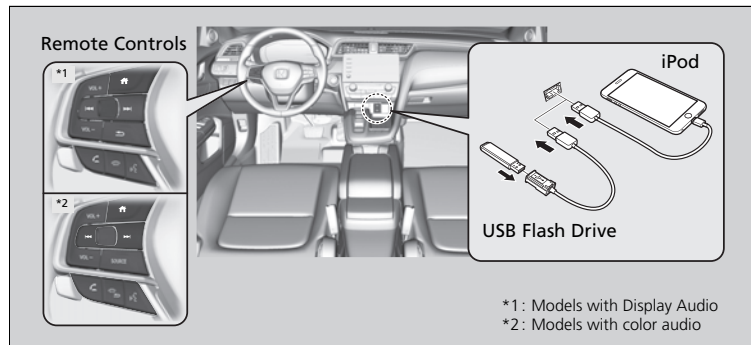


## About Your Audio System

The audio system features AM/FM radio and SiriusXM® Radio\* service. It can also play USB flash drives, and iPod, iPhone and **Bluetooth**® devices.

You can operate the audio system from the buttons and knobs on the panel, the remote controls on the steering wheel, or the icons on the touchscreen interface\*.



\*1: Models with Display Audio

\*2: Models with color audio

### About Your Audio System

iPod, iPhone and iTunes are trademarks of Apple Inc.

State or local laws may prohibit the operation of handheld electronic devices while operating a vehicle.

SiriusXM® Radio\* is available on a subscription basis only. For more information on SiriusXM® Radio\*, contact a dealer.

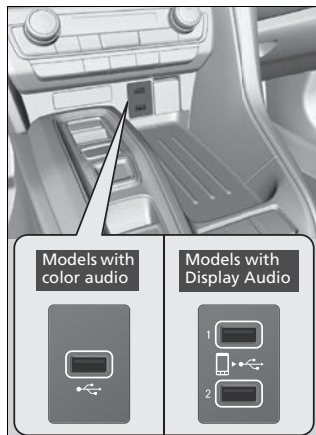
SiriusXM® Radio\* is available in the United States and Canada, except Hawaii, Alaska, and Puerto Rico.

SiriusXM® is a registered trademark of SiriusXM Radio\*, Inc.

\* Not available on all models

## USB Port(s)

Install the device USB connector or the USB flash drive to the USB port.



### Models with color audio

The USB port (1.0A) is for playing audio files on a USB flash drive, connecting a cellular phone and charging devices.

### Models with Display Audio

The USB ports (2.5A) are for charging devices, playing audio files and connecting compatible phones with Apple CarPlay or Android Auto.

- ▶ To prevent any potential issues, be sure to use an Apple MFi Certified Lightning Connector for Apple CarPlay, and for Android Auto, the USB cables should be certified by USB-IF to be compliant with USB 2.0 Standard.

### USB Port(s)

- Do not leave the iPod or USB flash drive in the vehicle. Direct sunlight and high temperatures may damage it.
- We recommend that you use a USB cable if you are attaching a USB flash drive to the USB port.
- Do not connect the iPod or USB flash drive using a hub.
- Do not use a device such as a card reader or hard disk drive, as the device or your files may be damaged.
- We recommend backing up your data before using the device in your vehicle.
- Displayed messages may vary depending on the device model and software version.

### USB charge

The USB port can supply up to 2.5A of power. It does not output 2.5A unless requested by the device. For amperage details, read the operating manual of the device that needs to be charged.

Under certain conditions, a device connected to the port may generate noise in the radio you are listening to.

## Audio System Theft Protection

---

The audio system is disabled when it is disconnected from the power source, such as when the 12-volt battery is disconnected or goes dead. In certain conditions, the system may display a code entry screen. If this occurs, reactivate the audio system.

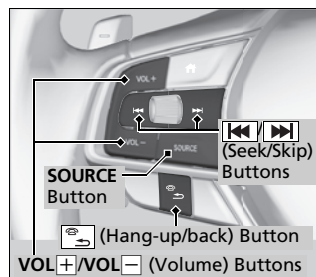
### ■ Reactivating the audio system

1. Set the power mode to ON.
2. Turn on the audio system.
3. Press and hold the audio system power knob for more than two seconds.
  - ▶ The audio system is reactivated when the audio control unit establishes a connection with the vehicle control unit. If the control unit fails to recognize the audio unit, you must go to a dealer and have the audio unit checked.

## Audio Remote Controls

### Models with color audio

Allow you to operate the audio system while driving.



### SOURCE Button

Cycles through the audio modes as follows:  
FM1→FM2→AM→USB/iPod→Pandora®→  
*Bluetooth®* Audio

### VOL+ /VOL- (Volume) Buttons

**Press VOL+**: To increase the volume.

**Press VOL-**: To decrease the volume.

### ◀◀/▶▶ (Seek/Skip) Buttons

- When listening to the radio
  - Press ▶▶**: To select the next preset radio station.
  - Press ◀◀**: To select the previous preset radio station.
  - Press and hold ▶▶**: To select the next strong station.
  - Press and hold ◀◀**: To select the previous strong station.
- When listening to an iPod, USB flash drive, or *Bluetooth®* Audio
  - Press ▶▶**: To skip to the next song.
  - Press ◀◀**: To go back to the beginning of the current or previous song.
- When listening to a USB flash drive, or *Bluetooth®* Audio
  - Press and hold ▶▶**: To skip to the next folder/group.
  - Press and hold ◀◀**: To go back to the previous folder/group.
- When listening to Pandora®
  - Press ▶▶**: To skip to the next track.
  - Press and hold ▶▶**: To select the next station.
  - Press and hold ◀◀**: To select the previous station.

### ►► Audio Remote Controls

Some modes appear only when an appropriate device or medium is used.

Depending on the *Bluetooth®* device you connect, some functions may not be available.

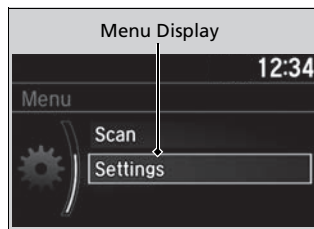
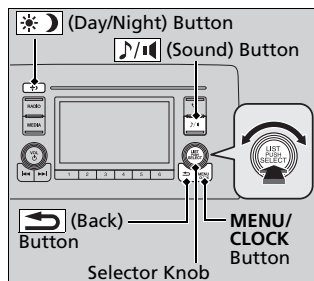
### Models with color audio

Press the ◻ (Hang-up/back) button to go back to the previous command or cancel a command.

# Audio System Basic Operation

## Models with color audio



To use the audio system, the power mode must be in ACCESSORY or ON.




**(Back) button:** Press to go back to the previous display.


**(Sound) button:** Press to select the sound setting mode.

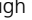
**(Day/Night) button:** Press to change the audio/information screen brightness.

Press the  button, then adjust the brightness using .

- ▶ Each time you press the  button, the mode switches between the daytime mode, nighttime mode and off mode.

Use the selector knob or **MENU/CLOCK** button to access some audio functions.

Press  to switch between the normal and extended display for some functions.

**Selector knob:** Rotate left or right to scroll through the available choices. Press  to set your selection.

**MENU/CLOCK button:** Press to select any mode.

The available modes include wallpaper, display, clock, language setup, and play modes. Play mode choices include scan, random, repeat, and so on.

## Audio System Basic Operation

These indications are used to show how to operate the selector knob.

Rotate  to select.

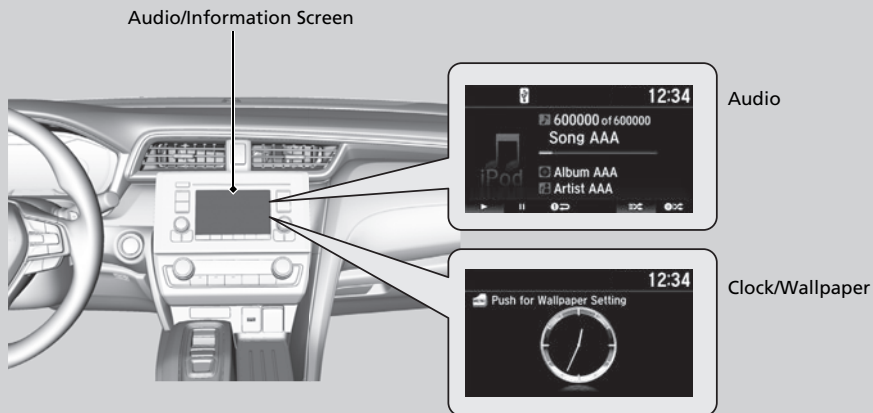
Press  to enter.

Press the button on the steering wheel to change any audio setting.

## Audio/Information Screen

Displays the audio status and wallpaper. From this screen, you can go to various setup options.

### ■ Switching the Display









## ■ Audio

Shows the current audio information.

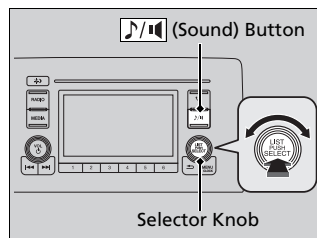
## ■ Clock/Wallpaper



Shows a clock screen or an image you import.

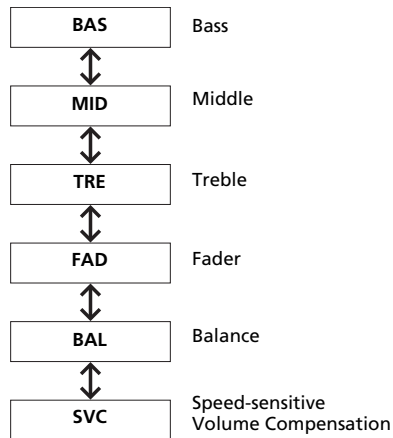
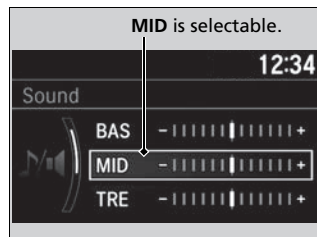
## ■ Change display



1. Press the **MENU/CLOCK** button.
2. Rotate  to select **Settings**, then press .
3. Rotate  to select **Display Change**, then press .
4. Rotate  to select **Wallpaper**, then press .
  - ▶ If you want to return to the audio display, select **Audio**.

## Adjusting the Sound



Press the  (sound) button, and rotate  to scroll through the following choices:



Rotate  to adjust the sound setting, then press .

### Adjusting the Sound

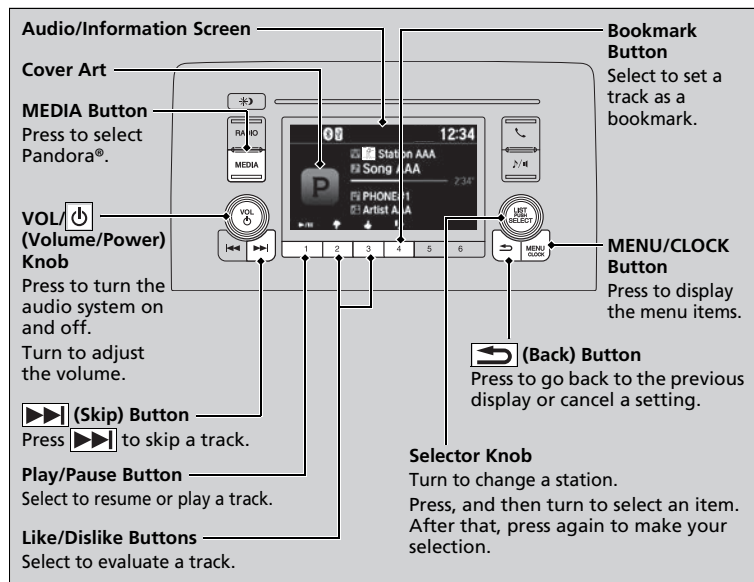
The SVC has four modes: **Off**, **Low**, **Mid**, and **High**. SVC adjusts the volume level based on the vehicle speed. As you go faster, audio volume increases. As you slow down, audio volume decreases.



## Playing Pandora®

Your audio system allows you to listen to music from the Pandora® app on a compatible smartphone.

This function is available when the phone is paired and connected to the vehicle's **Bluetooth®** HandsFreeLink® (HFL) system, or with an iPhone, you can connect using your USB cable to the USB port.



### Playing Pandora®

Pandora®, the Pandora logo, and the Pandora trade dress are trademarks or registered trademarks of Pandora Media, Inc., used with permission. Pandora is only available in certain countries. Visit the Pandora website for more information.

To find out if your phone is compatible with this feature, visit [automobiles.honda.com/handsfreelink/](http://automobiles.honda.com/handsfreelink/), or call 1-888-528-7876.

To use this service in your vehicle, the Pandora® app must first be installed on your phone. Visit [www.pandora.com](http://www.pandora.com) for more information.

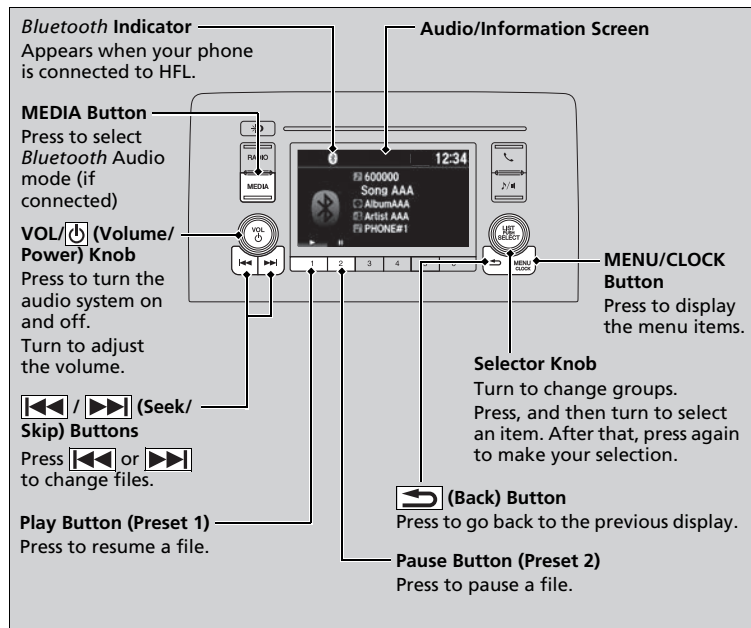
Pandora® is free, personalized radio that plays music and comedy you'll love. Just start with the name of one of your favorite artists, tracks, comedians or composers and Pandora® will create a custom station that plays similar tracks. Pandora® also features hundreds of genre stations ranging from Dubstep to Smooth Jazz to Power Workout.

If you cannot operate Pandora® through the audio system, it may be streaming through **Bluetooth®** Audio. Make sure Pandora® mode on your audio system is selected.

## Playing *Bluetooth*® Audio

Your audio system allows you to listen to music from your *Bluetooth*-compatible phone.

This function is available when the phone is paired and connected to the vehicle's *Bluetooth*® HandsFreeLink® (HFL) system.



### ▶▶ Playing *Bluetooth*® Audio

Not all *Bluetooth*-enabled phones with streaming audio capabilities are compatible with the system. For a list of compatible phones, visit [automobiles.honda.com/handsfreelink/](http://automobiles.honda.com/handsfreelink/), or call 1-888-528-7876.

In some states, it may be illegal to perform some data device functions while driving.

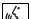
Only one phone can be used with HFL at a time. When there are more than two paired phones in the vehicle, the first paired phone the system finds is automatically connected.

If more than one phone is paired to the HFL system, there will be a delay before the system begins to play.

In some cases, the name of the artist, album, or track may not appear correctly.

Some functions may not be available on some devices.

## Siri® Eyes Free

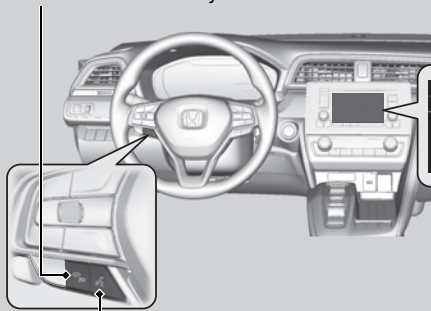
You can talk to Siri using the  (Talk) button on the steering wheel when your iPhone is paired to the **Bluetooth®** HandsFreeLink® (HFL) system.

### ■ Using Siri Eyes Free



#### (Hang-up/back) Button

Press to deactivate Siri Eyes Free.



#### (Talk) Button

Press and hold until the display changes as shown.



Appears  
when Siri is  
activated in  
Siri Eyes Free

While in Siri Eyes Free:  
The display remains the same.  
No feedback or commands  
appear.

#### ▶▶ Siri® Eyes Free

Siri is a trademark of Apple Inc.

Check Apple Inc. website for features available for Siri.

We recommend against using Siri other than in Siri Eyes Free while operating a vehicle.

#### ▶▶ Using Siri Eyes Free

Some commands work only on specific phone features or apps.

This audio system cannot operate the audio functions by using Siri Eyes Free.